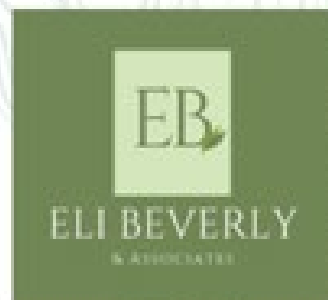


# Habitat Summit 2022





# HABITAT SUMMIT 2022 SPONSORS



# Agenda

- Welcome
- Questions for You
- Mission
  - Expanding Public Lands
  - Saving Family Farms
  - Protecting Local Waters
- Questions



THREE RIVERS  
LAND TRUST

# Questions For You





# How Many Total Parcels In The Following Counties?

- Rowan County
- Davidson County
- Anson County
- Cumberland County





# How Many Parcels In The Following Counties?

- Rowan County - 79,000
- Davidson County - 93,000
- Anson County - 19,000
- Cumberland-136,060





# How Many Parcels over 50+ Acres In Those Counties?

- Rowan County - 1,000 or 1.2%
- Davidson County - 1,000 or 1.0%
- Anson County – 1,000 or 5.2%
- Cumberland- 1,324 or less than 1%





A paved road with double yellow lines winds through a forest with autumn foliage. The trees are mostly deciduous, with leaves in shades of yellow, orange, and brown. The road is dark asphalt, and the ground on either side is covered in fallen leaves and pine needles. In the distance, a railroad crossing sign is visible on the right side of the road.

# Who is Three Rivers Land Trust?



# TRLT Track Record

- Total Land Conserved: over 46K acres
- Own and manage over 7,000 acres
- 2021-13:1 project verses operational dollar





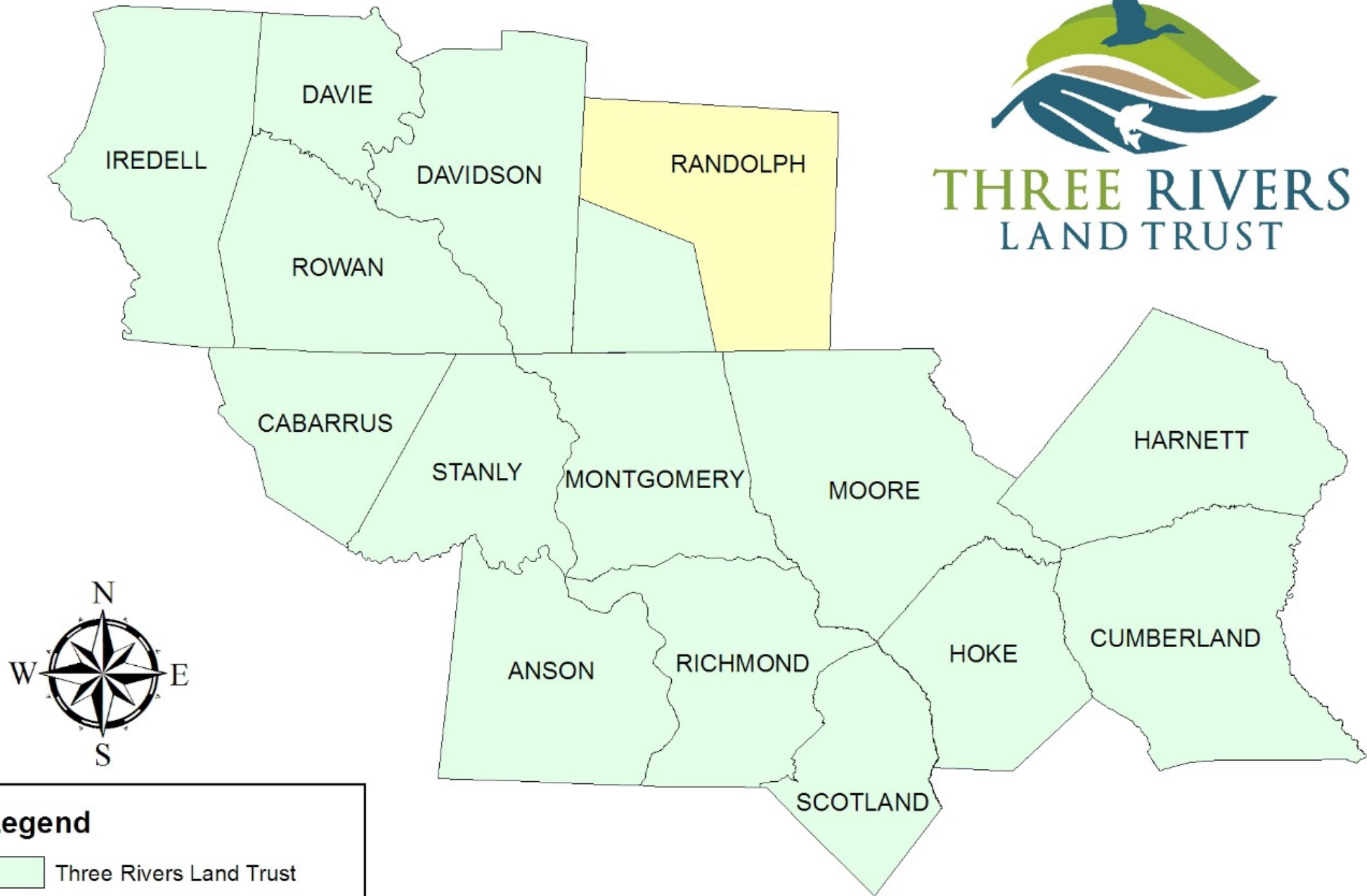
# Three Rivers Land Trust-ESP

- Expand Public Lands
- Save Family Farms
- Protect Local Waters


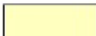




## THREE RIVERS LAND TRUST



### Legend

-  Three Rivers Land Trust
-  Piedmont Land Conservancy





# Expanding Public Lands

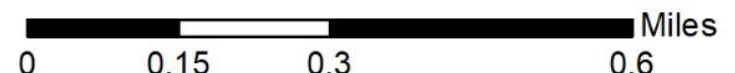


# Expand Public Lands

- Over the last 27 years, TRLT has added over 8,000 acres to the public trust
  - Local Parks
  - State Parks
  - National Forest
  - Game Lands

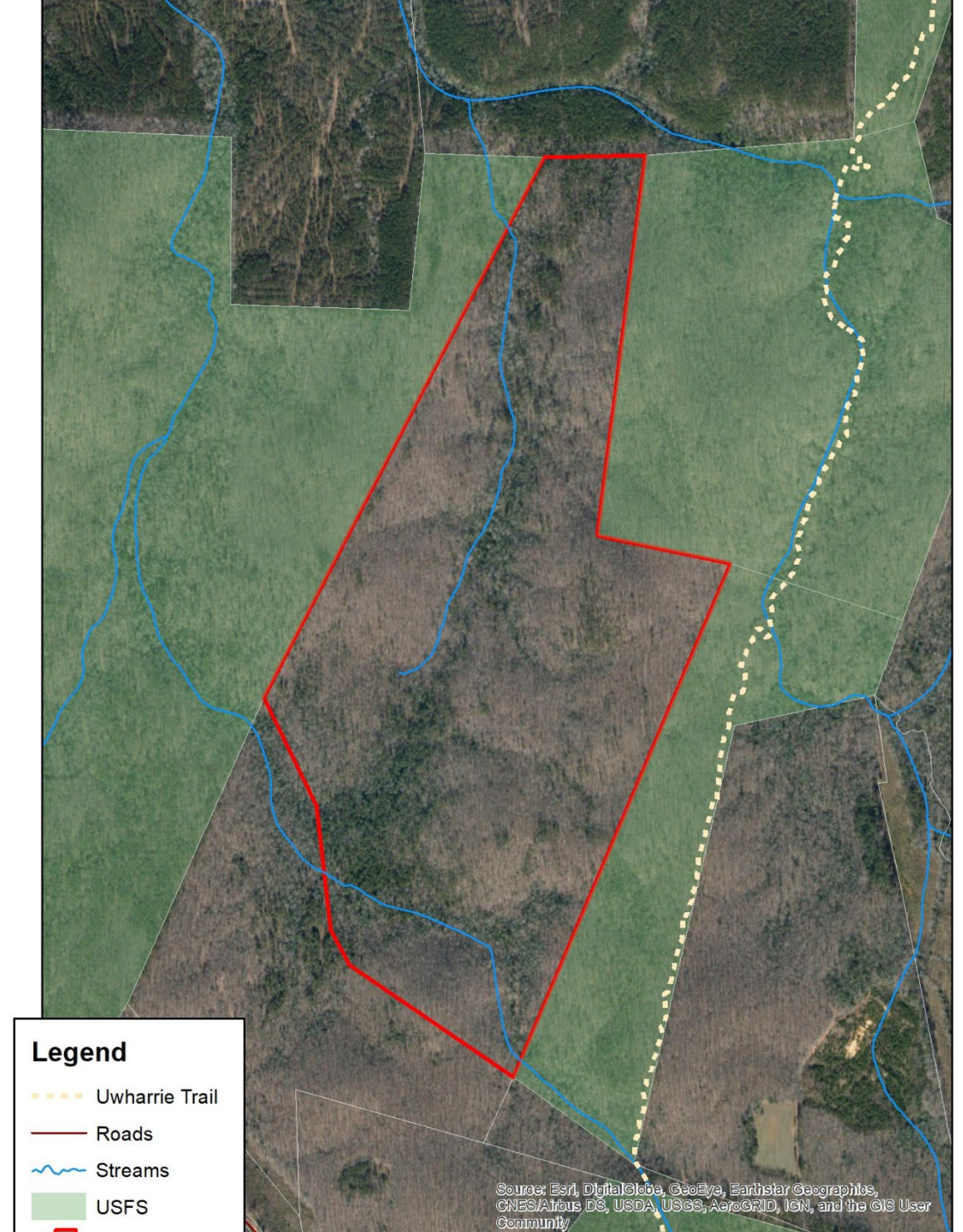








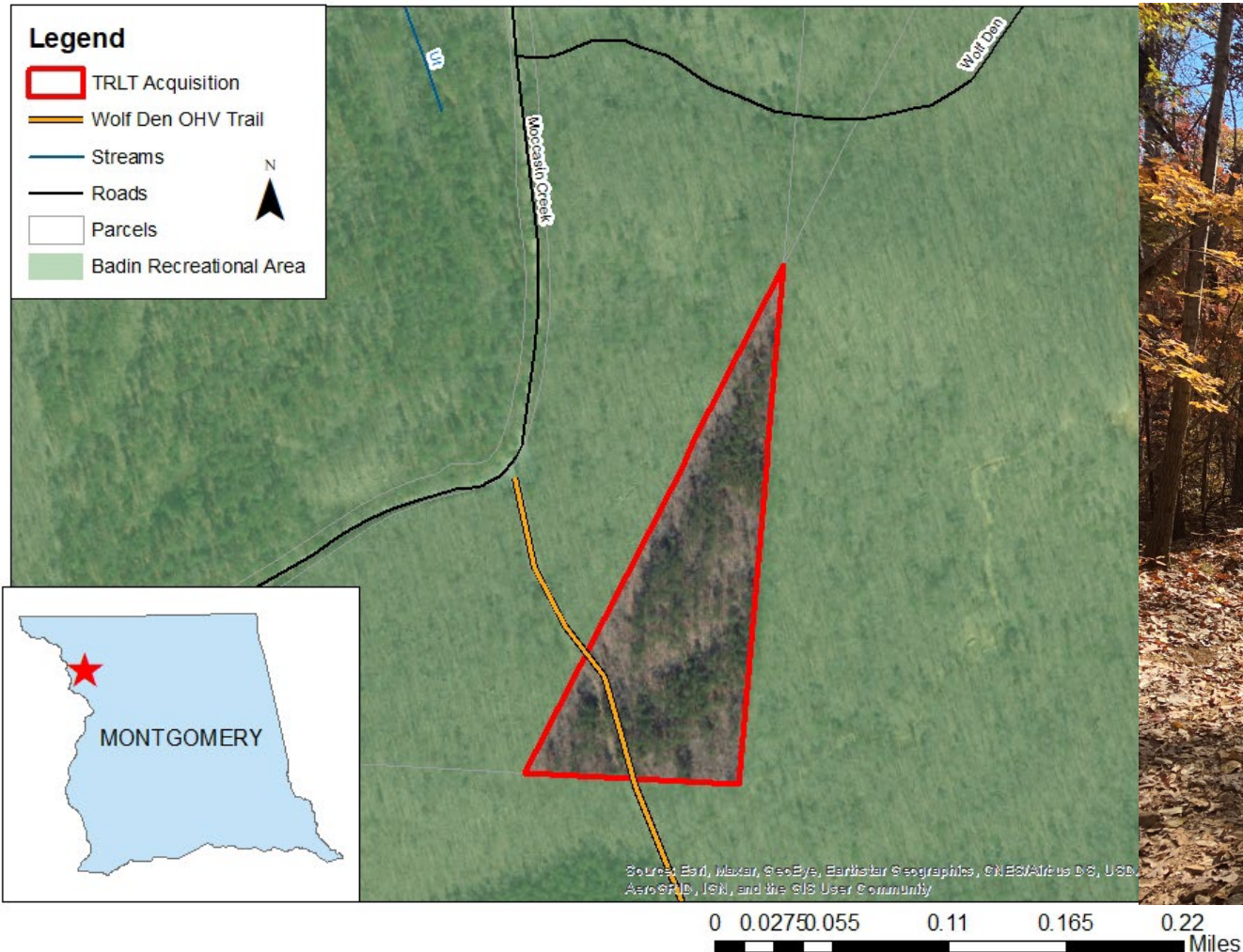
# Uwharrie National Forest





# Uwharrie National Forest

## TRLT 8.08 Acre Acquisition



LAND TRUST





# Saving Family Farms



# TRLT-Saving Family Farms

- TRLT has conserved over 17K acres of local family farms
- Recently awarded \$3.9M dollars to conserve over 2,000 additional acres







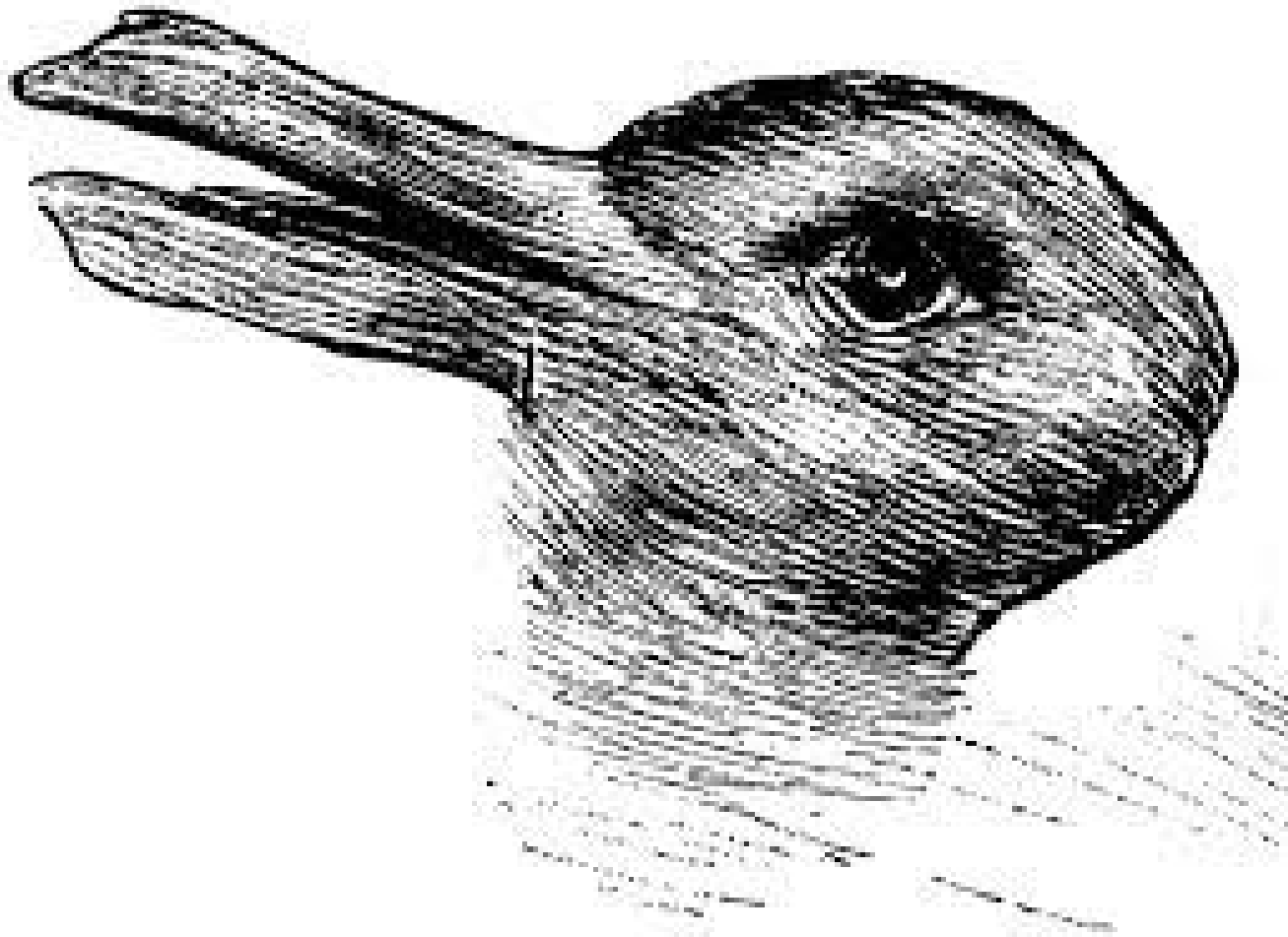


# What Do You See?





# What Do You See?






What Do You See ?





**NOW SELLING**



**WRIGHTS FARM**

**HOMES STARTING IN  
THE HIGH**



# Farm Conversion Facts

- 732,000 acres
- 5.5 acres every hour for 15 years
- 1.1 million acres by 2040
- 59% of NC agricultural lands are on soils that are considered “nationally significant”
- It can take 2-3 times the number of acres of marginal soils to yield as much a nationally significant soils
- Primary conversion of farmland is to Low Density Residential Uses (LDR)



THREE RIVERS  
LAND TRUST



# Farm Conversion Facts

- North Carolina ranks 6<sup>th</sup> in the nation for farmland conversion by 2040
- North Carolina ranks 2<sup>nd</sup> in the nation for potential agriculture land loss





# Who Said This?

- “The lands only hope is for them to be its steward. The ugly truth is, they want the land, and if they get it, it will never look like our land again. That is progress in today’s terms. So if it’s progress you seek, do not vote for me. I am the opposite of progress, I am the wall it bashes against and I will not be the one who breaks”.





# Protecting Local Waters





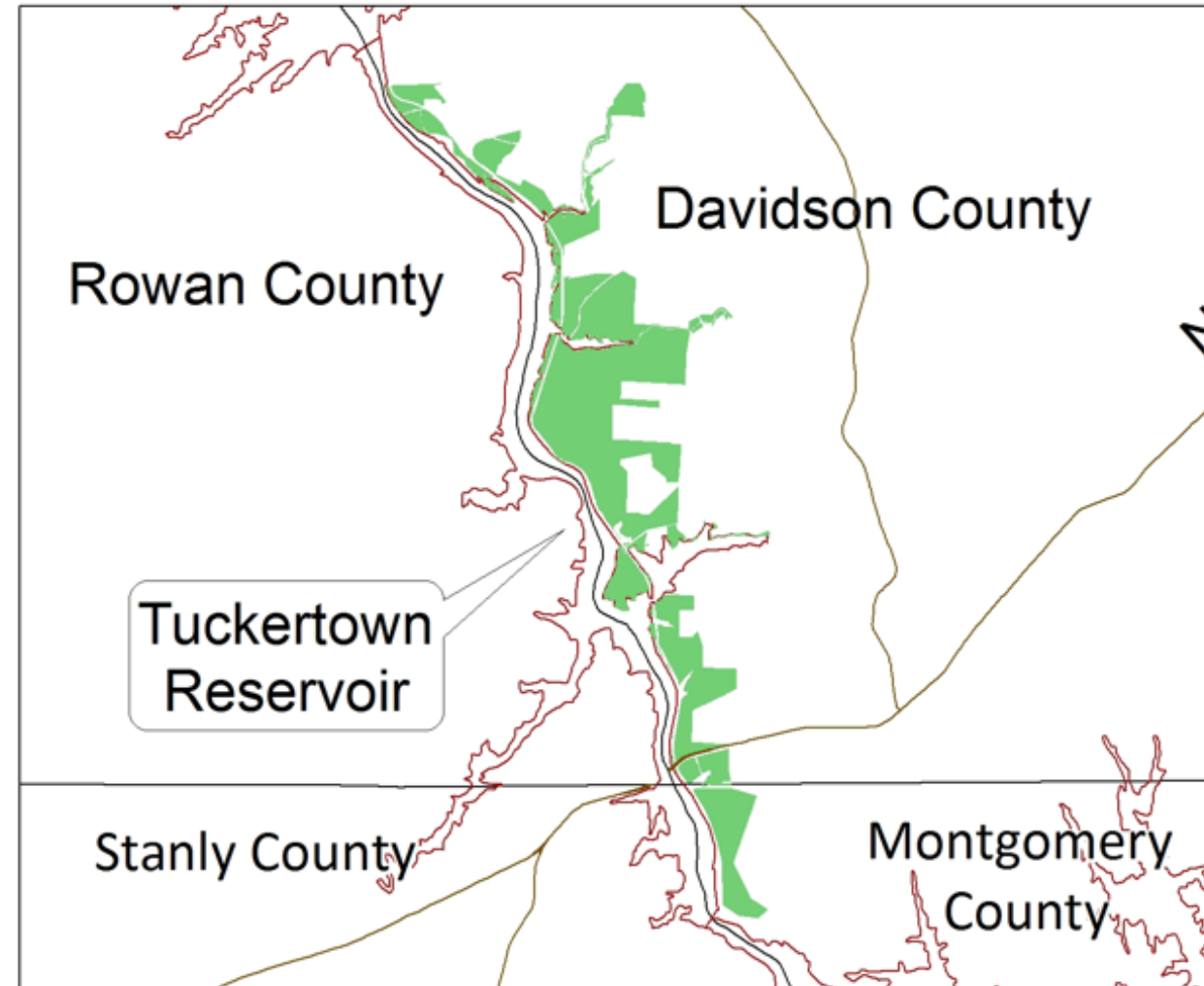
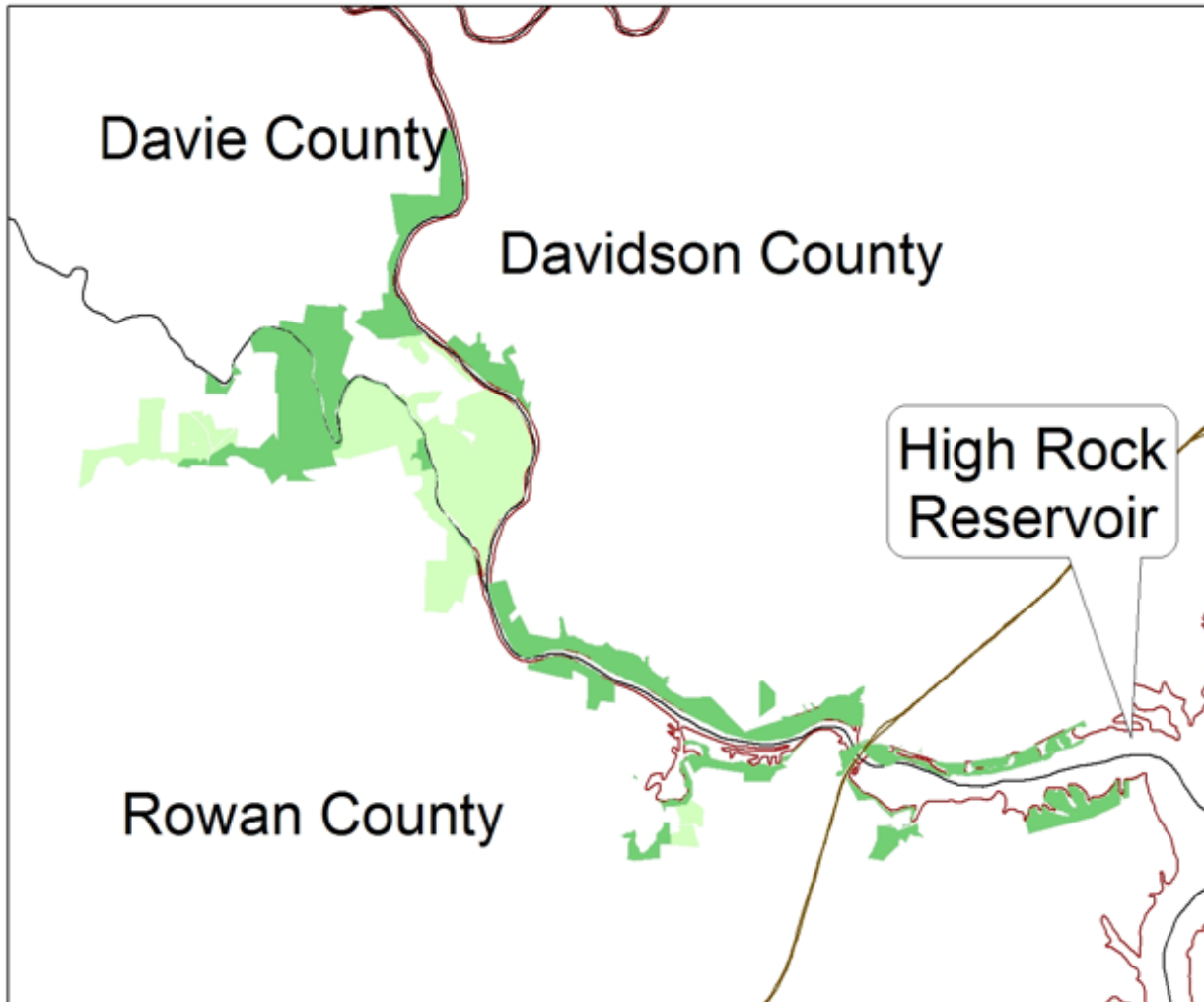
# Protecting Local Waters

- TRLT has protected over 300 miles of river and stream frontage since 1995
- Over 41 Miles of stream frontage was protected in the last 12 months.
- Additional 21 miles in next 12 months.





# Yadkin River Game Land Projects







# Upcoming Ways to Become Involved with TRLT!



# Sportsman Access Program

- “Considering the number of local and regional land trusts in the nation, hunting opportunity could be greatly expanded-as well as funding for their conservation work-if more of them considered adopting a program like Three Rivers Land Trust’s SAP”

## ***Innovation in Hunting Access***

A North Carolina land trust's access program could be a model for future public hunting opportunity.

Like most non-profits of its kind, Three Rivers Land Trust in central North Carolina works to conserve land, habitat and rural landscapes through stewardship of conservation easements on private lands or outright purchases of land. In 2017, the Land Trust unveiled a new Sportsman Access Program (SAP) to encourage sportsmen and women to join the Land Trust as a member and support local conservation. SAP uses the 3,000 acres owned by the Land Trust to provide hunting access on conservation property. Previously, the Land Trust leased these lands to local hunt clubs and to private individuals. Though hunting occurred on these properties, the Land Trust wanted to provide more opportunities for the general public and for them to become familiar with the Land Trust's conservation efforts.

At the end of 2016, all of the existing hunt leases expired and none were renewed for the upcoming 2017 season. Instead, the Land Trust decided to try a different approach – an approach that would be based on well established “draw” hunting programs offered by many state wildlife agencies.

“The idea was to create an environment that had an intrinsic value that hunters would easily recognize,” said Travis Morehead, Executive Director. “We wanted members who drew a block to covet that opportunity, much like deer hunters covet a non-resident deer tag in the Midwest.”

Having a staff comprised totally of



**DRAW HUNTS** on conserved easement lands owned by Three Rivers Land Trust in North Carolina are producing high-quality access. If similar programs were adopted by more land trusts, thousands of acres in every state could be opened to hunting while increasing funding for conservation efforts.



hunters and anglers, the Land Trust set out to create a safe, fair, low-cost solution for the use of the organization's properties. After hours of internal discussion, the basic tenants of the SAP were established:

1. Each “draw” equals one week of hunting opportunity.
2. Lands are divided into smaller blocks using hard boundaries like roads, trails and rivers. Blocks vary in size but are generally 200 acres or larger.
4. During a hunt any game animal with an open season can be harvested.
5. Draws are conducted three times a year to encourage year-round enrollment.
6. An annual membership fee of \$100 earns four draws, or a chance of up to four weeks of hunting.
7. A participant picks the week(s) and the block(s) they want to hunt. A computer program randomly selects the winner.
8. Participants can earn extra draws by volunteering with the Conservation Lands Manager or by having new members list them as the reason they joined.

Since its launch, the Sportsman Access Program has become the Land Trust's leading membership development program, with retention of SAP members exceeding 90 percent. Not only are local members happy with the program, the Land Trust now has SAP members in Florida, Georgia, New York, Ohio, Pennsylvania, South Carolina, Tennessee and Virginia. To date,

the program has a 100 percent draw success rate. As draws have become more competitive, the Land Trust continues to open additional owned properties in order to accommodate the growing number of participants.

“Eventually, we will come to a point where someone goes away empty-handed, but so far, we haven't had that happen,” said Travis. “This year we are investing in additional wildlife plantings and habitat management to improve not only our property and the wildlife, but also to improve the likelihood of hunter success.”

In its first season, the SAP had some fantastic hunter success including a 23-lb. gobbler with an 11-inch beard and a 146-inch whitetail.

“This program not only provides great hunting opportunities on low-pressure conserved lands, but it also allows sportsmen and women to see their conservation dollars at work,” said Mikey Fulk, Associate Director.

Considering the number of local and regional land trusts in the nation, hunting opportunity could be greatly expanded – as well as funding for their conservation work – if more of them considered adopting a program like Three Rivers Land Trust's SAP.

To find out more about the SAP, visit [threeriverslandtrust.org](http://threeriverslandtrust.org) or call 704-647-0302.



**BEING HUNTERS & ANGLERS** as well as QDMA members, the staff of Three Rivers Land Trust makes a competition out of “Age This” whenever a new issue of Quality Whitetails arrives.



# Conservation Raffle

- Drawing is October 8<sup>th</sup>
- Ticket Price is \$100
- Prizes Include:
  - Ford F-150 4x4
  - Subaru CrossTrek
  - John Deere Gator
  - ATV
  - Much More!



# THREE RIVERS LAND TRUST

## TRLT CONSERVATION RAFFLE

**TICKETS AVAILABLE APRIL 1 | DRAWING ON OCTOBER 1**  
TROY TOWNSTAGE AMPHITHEATER (225 SMITHERMAN ST, TROY, NC 27371)



### TICKETS \$100 EACH

SUPPORT LOCAL CONSERVATION & HAVE THE CHANCE TO WIN



## \$200,000 IN PRIZES

ONLY 5,000 TICKETS SOLD





### ← EARLY BIRD DRAWING

BUY YOUR TICKETS BEFORE JULY 31ST TO BE ELIGIBLE FOR THE EARLY BIRD DRAWING!  
TICKETS CAN BE PURCHASED BY MAIL-IN CHECK OR ONLINE AT [TRLT.ORG/RAFFLE](https://trlt.org/raffle)  
CALL 704-647-0302 FOR MORE INFO

• 2022 FORD F-150 STX 4X4	• BOTE PADDLE BOARD	• M2S E-BIKES
• 2022 SUBARU CROSSTREK SPORT	• TRAEGER GRILL	• BASS PRO GIFT CARDS
• 2022 TRACKER GRIZZLY 1648 SC	• SHADOW HUNTER MARKSMAN TOWER BOX BLIND W/ STAND	• ROCK OUTDOORS GIFT CARDS
• 2022 JOHN DEERE XUV 560E	• MATHEWS V3X 29" BOW	• ANDY'S TAXIDERMY GIFT CARD
• OLD TOWN SPORTSMAN 106	• BENELLI SUPER BLACK EAGLE 3	• \$18,000 IN CASH PRIZES
• YETI COOLERS		• & MORE!





Connected to the Land.  
Committed to Conservation.

## TRLT.ORG/RAFFLE



# Habitat Enhancement Lands Program

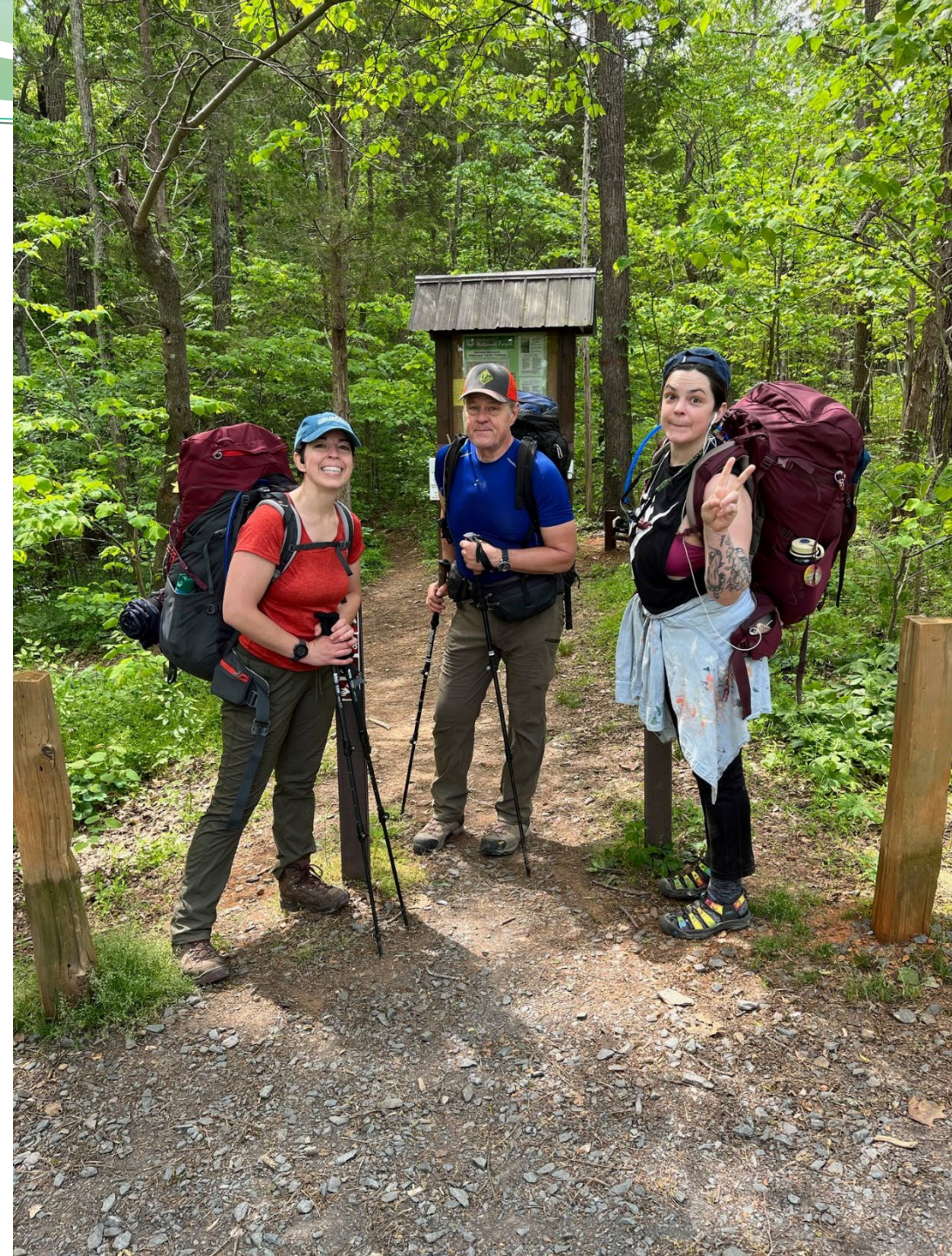
- TRLT provides technical advice to landowners on potential habitat improvements
- Contact Katie Stovall for more information





# Uwharrie Trail Thru Hike

- October 13-16
- Supported Hike 40 miles in 4 days
- Great atmosphere for first time hikers
- Cost: \$150 per person





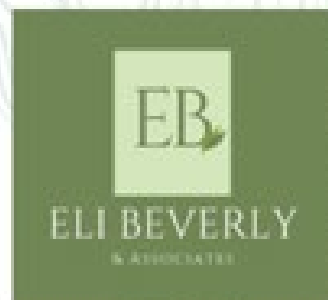
# Announcements

- Kip Adams Session Habitat Focused Approaches to QDM is in this room
- Method to Meet Your Property Management Goal is in the Peddler Room
- Continuing Education Credits- sign up is at registration
- Complete and turn in the survey/nametag for a chance at a Cabelas Gift Card, 1 per room.





# HABITAT SUMMIT 2022 SPONSORS





# Questions?

