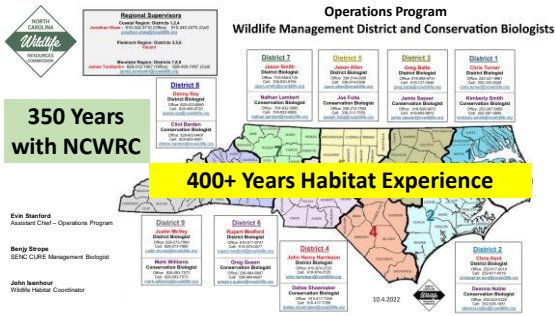


## Conservation Costs:

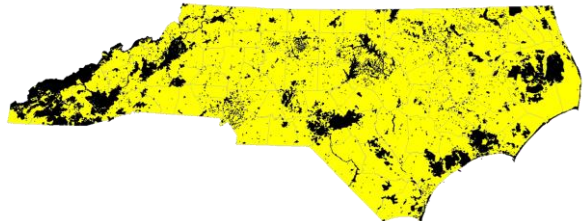


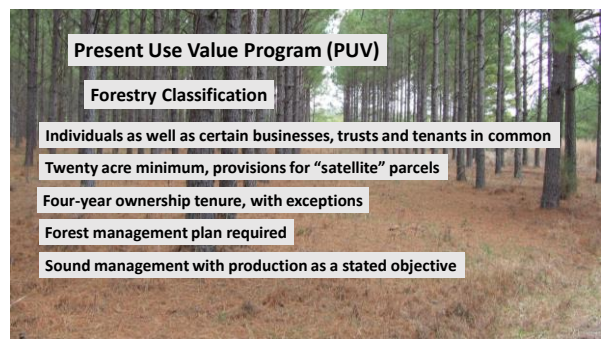
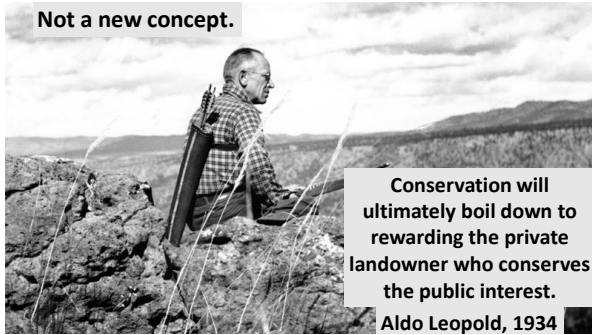
### Bridging the Financial Gap to Enhance Wildlife Habitat

John Isenhour  
Wildlife Habitat Coordinator  
NC Wildlife Resources Commission



Private / Corporate Lands > 80% NC Acreage







### Present Use Value Program (PUV)

#### Agriculture Classification

Individuals as well as certain businesses, trusts and tenants in common  
 Ten acre minimum, provisions adjacent "woodland"  
 Four-year ownership tenure, with exceptions  
 One-thousand-dollar annual production, crops, plants and animals  
 Conservation Reserve Program maintains Agriculture PUV status

### Present Use Value Program (PUV)

#### Horticulture Classification

Individuals as well as certain businesses, trusts and tenants in common  
 Five acre minimum  
 Four-year ownership tenure, with exceptions  
 Must be in active production of fruits, vegetables or floral products

### Wildlife Conservation Land Program (WCLP)

Similar, but not a component of PUV

Created by a separate legislation to provide a property tax deferment for land managed as "Wildlife Conservation Land"

Individuals as well as family businesses, trusts and tenants in common

Twenty-acre contiguous habitat minimum, provision for "satellite" parcels

Four-year ownership tenure, with exceptions

Wildlife Habitat Conservation Agreement with NCWRC required

Three qualifying classifications, or "criteria"

### Wildlife Conservation Land Program (WCLP)

#### Criterion 1: Protected Species

Protect an animal species that lives on the land and is on a list of protected animal published by the NCWRC in G.S. 113-333.

#### PROTECTED WILDLIFE SPECIES OF NORTH CAROLINA



North Carolina Wildlife Resources Commission  
 November 2011  
 October 1, 2011

### Wildlife Conservation Land Program (WCLP)

#### Criterion 2: Priority Habitat

Conserve a priority wildlife habitats:  
 Longleaf pine forest  
 Early successional habitat  
 Small wetland community  
 Stream and riparian zone  
 Rock outcrop  
 Bat cave

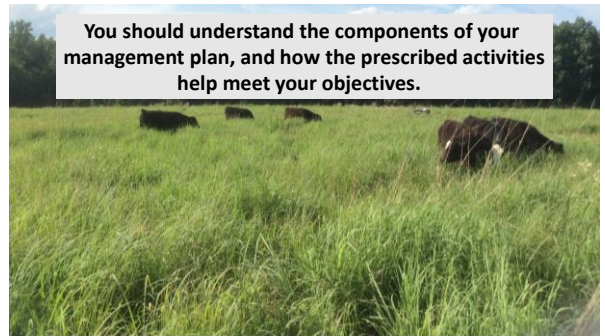
### Wildlife Conservation Land Program (WCLP)

#### Criterion 3: Wildlife Reserve Land

Land actively and regularly use as a reserve for hunting, fishing, shooting, wildlife observation, or wildlife activities.

Must follow a Wildlife Habitat Conservation Agreement which includes three of the seven eligible management practices:

Supplemental food  
 Supplemental water  
 Supplemental shelter  
 Habitat control  
 Erosion control  
 Predator control  
 Census of animal populations on the land



## Native Warm Season Grass



Jason Smith  
District 7 Wildlife Biologist

## What Is Native Warm Season Grass?

Historical grass native to NC

Perennial

Bunch Grass



Summer



Winter

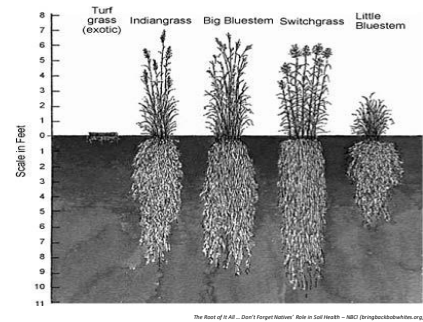
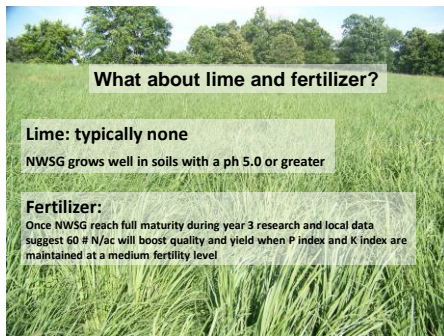
## Species of Native Warm Season Grass (NWSG)



\* pictures from C. A. Harper, G. E. Baskin, M. J. Qualls, and M. P. Hunsbrough 2004  
A Landowner's Guide to Native Warm-Season Grasses in the Mid South, PG 11-14b.

## C4 Grass

- Peak growth mid-summer
- Adapted to high light intensities and high temperatures
- Efficiently uses water and nutrients



## Grazing

- Very Drought Tolerant
- High Weight Gains 2 lbs/day
- High Yield 3-6 tons/ac  
(twice the yield of typical cool season grasses)
- Endophyte Free
- High Quality





## Hay

Very Drought Tolerant

High Yield 2.5 – 4 tons/acre for a single cutting

(5-8 tons/ac per year)  
(fescue averages 3.1 tons/ac per year)

High Quality 10%-16% crude protein

Quick and Easy to Cure



## How does wildlife benefit from NWSG?

Bunch grass growth pattern does not create sod which provides pockets of bare soil.

Creates open space on the ground and supplies canopy cover above.

Provides safety for ground nesting birds and allow safe movement for small mammals.

Haying is usually delayed long enough in the spring to allow ground nesting birds time to nest.



## Species That Benefit



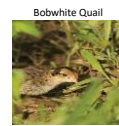
Eastern Wild Turkey



Eastern Cottontail Rabbit



White-tailed Deer



Bobwhite Quail



Eastern Meadowlark



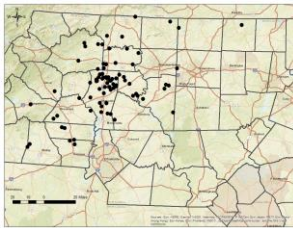
Grasshopper Sparrow

## A Few Landowner Success Stories





## NWSG Silvopasture

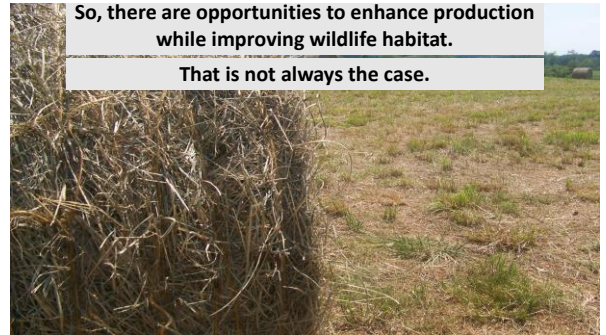


**2007-2022**

- 90 Cattle Farmers
- 1500 ac NWSG

So, there are opportunities to enhance production while improving wildlife habitat.

That is not always the case.



Financial assistance, "cost share" is available to support conservation efforts on private lands.

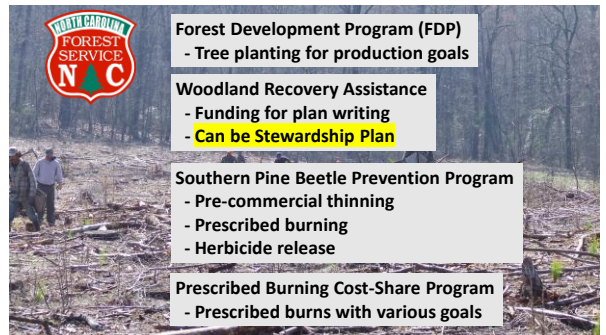


**Forest Development Program (FDP)**  
- Tree planting for production goals

**Woodland Recovery Assistance**  
- Funding for plan writing  
- **Can be Stewardship Plan**

**Southern Pine Beetle Prevention Program**  
- Pre-commercial thinning  
- Prescribed burning  
- Herbicide release

**Prescribed Burning Cost-Share Program**  
- Prescribed burns with various goals





### Conservation Reserve Program (CRP)

Cropland, grassland and pasture options

Funding for establishment and rental payments

Continuous and general sign-up

Minimum contract of ten years



### Environmental Quality Incentive Program (EQIP)



Contracts five years or less

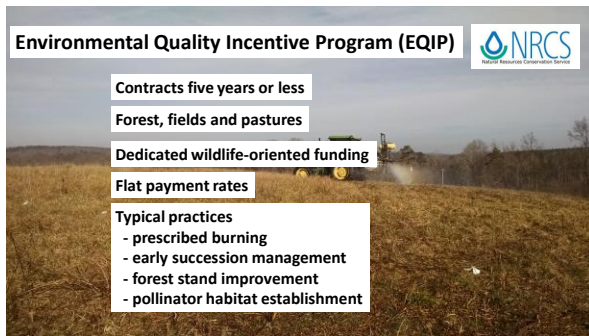
Forest, fields and pastures

Dedicated wildlife-oriented funding

Flat payment rates

Typical practices

- prescribed burning
- early succession management
- forest stand improvement
- pollinator habitat establishment



### Conservation Stewardship Program (CSP)



Five-year contract

Takes all your land holdings into consideration

Ranking is very competitive and somewhat complex

Stewardship payments and practice implementation payments

Extremely high payment rates for some practices



### Other Funding Sources



A plan is critical for management success.

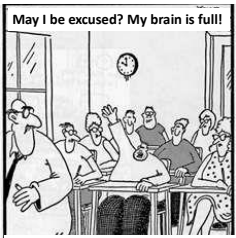
Well defined goals and objectives are essential for a quality management plan.

Get assistance from a professional that understands your goals and management/funding options.

The money is going to be spent, let's get more spent for wildlife!







**ncwildlife.org**

<p><b>John Isenhour</b> (704)213-4825 john.isenhour@ncwildlife.org</p>	<p><b>Jason Smith</b> (704)546-5130 jason.smith@ncwildlife.org</p>
--	--