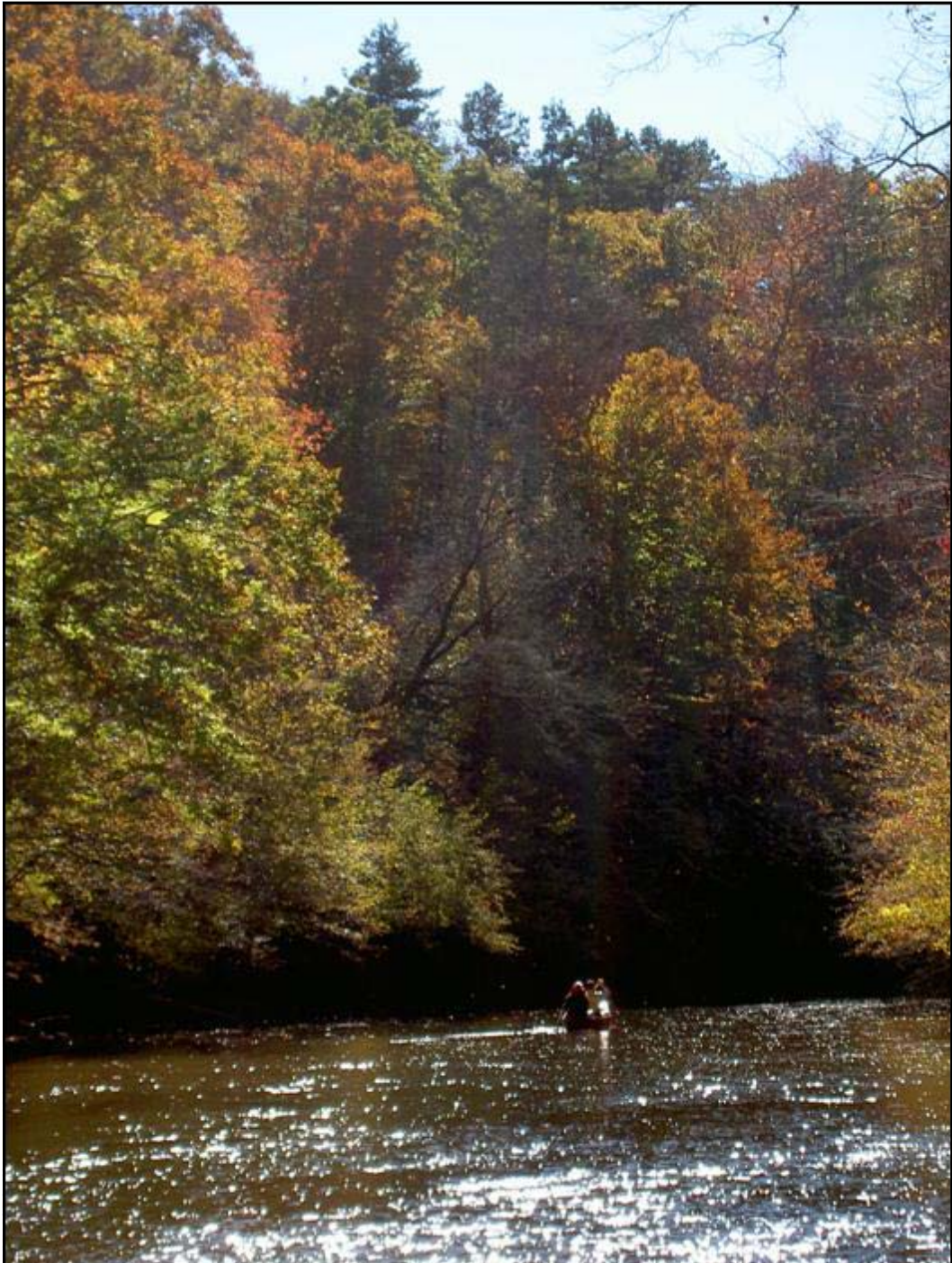




# THE LANDMARK

WINTER 2007



*Bingham Lands—1160 acres along the Uwharrie River*

*Inside this issue:*

- Director's Letter
- Land Protection Successes
- Planned Giving Options
- Corporate Partner Benefits
- Recent Outings
- Upcoming Events
- Donor Recognition
- Board Member Profile

# LETTER FROM THE DIRECTOR

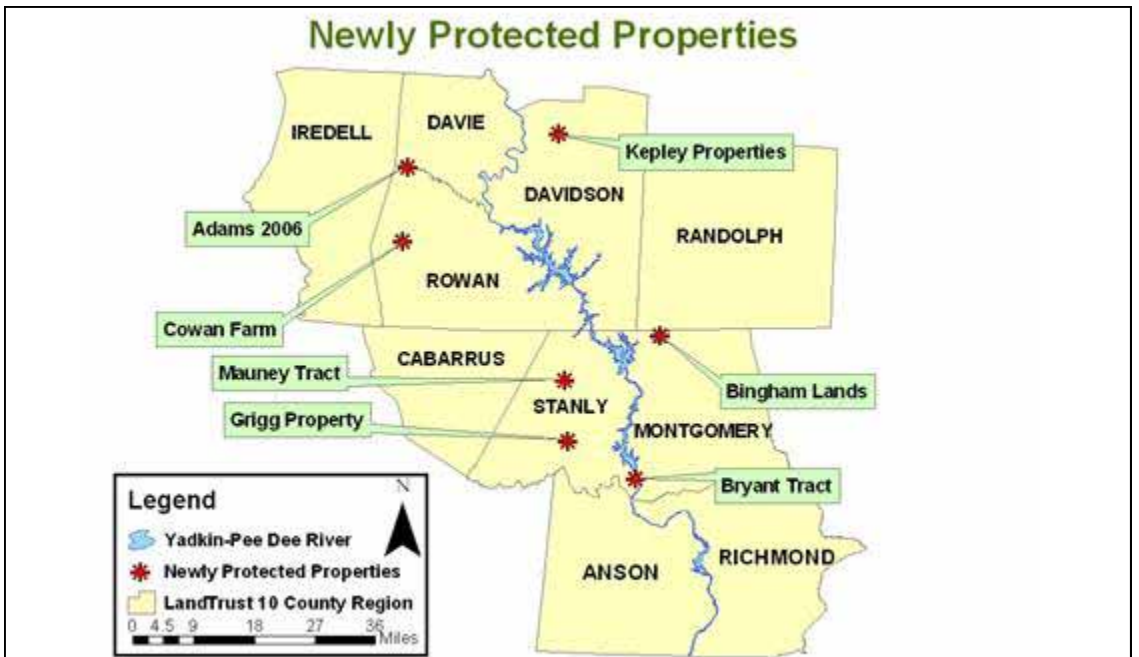


**Jason A. Walser**

Richard Louv is the author of a best-selling book entitled “Last Child in the Woods: Saving our Children from Nature Deficit Disorder.” He notes that in 2002 more eight year olds could correctly identify “Pokemon” characters than could readily name otters or identify oak trees. He also comments on how we have fragmented our landscape in such a way that accessing our natural world is increasingly difficult for today’s youth. Add to this dilemma a generation of parents who did not grow up in natural environments themselves, and it is easy to see why fewer and fewer of today’s youth frequently experience nature.

I certainly identify with this trend. At my son’s school, they strongly discourage riding bikes or walking due to legitimate fears of liability with regards to heavy traffic, sexual predators, and all the other “dangers” that confront kids in the great outdoors. (His school is surrounded by a spectacular 200 acre nature preserve behind Catawba College and connected to my neighborhood by a paved greenway.) At churches and parks throughout our region, playgrounds are being decommissioned due to liability concerns with outdated equipment. In neighborhoods around us, “no trespassing” signs are going up on vacant lots that were once home to children’s football and baseball games.

Even in the land trust community, we are advised not to use the word “wild” in our outreach efforts, as research indicates a connotation involving “threat” instead of more traditional notions of “natural” or “unspoiled.” All these fears are understandable. But many of us have our own fears about how our changing landscape will affect us as a society over the long term. Childhood obesity is quickly becoming an epidemic in this country, and insomnia, hypertension, and depression are also on the rise for us grown ups. We certainly cannot blame all these societal ills on our disconnection with nature. However, I do believe that our work at The LandTrust is vital in dealing with these new realities. Right now, we are working on the creation of 10,000 acres of permanent game lands. We are also involved with the creation and expansion of parks and national forest land. Furthermore, we regularly provide opportunities for people to get out on these beautiful lands to appreciate them more and learn how to access them on their own. I am proud of the role we play in providing opportunities to get the citizens of the Southern Piedmont reconnected with our inspiring and comfortable – not “threatening” – natural places.



# LandTrust Completes Largest Acquisition Yet – Bingham Lands



## *Local Treasure and Miles of Uwharrie River Protected*

Spend a few minutes at the Low Water Bridge in Montgomery County and you'll likely feel as though you just stepped back in time. The clear flowing Uwharrie River waters run inches beneath the bridge, towering oaks and sycamores line the banks, while nearby otters dive in search of their favorite foods. Excluding the bridge, the scene probably looks much as it has for hundreds of years. Yet, the most impressive aspect is the complete peacefulness



*The Low Water Bridge, a local icon.*

experienced while taking in the forested scenery and listening to the waters rush by below. Add in the local history and appreciation of the site and you have just the type of spot that The LandTrust prides itself on protecting - the places *you* love!

The LandTrust is very pleased to announce the acquisition of the Bingham Lands, a 1,160 acre tract of forestland surrounding the Low Water Bridge. This marks the largest single acquisition in our eleven year history. It also greatly advances our work in the Uwharrie Mountain region and along the Uwharrie River itself. "This project is a great achievement for our organization," says Kevin Redding, Associate Director. "It protects a tremendous forest, maintains a recreational resource for the public and will hopefully springboard additional conservation in the Uwharries."

In the summer of 2005, a Uwharrie River Corridor Plan was completed by then Duke University Stanback Intern and now full-time Uwharrie Conservation Specialist Crystal Cockman. The plan

*Continued on Page 4...*

# Bingham Lands Acquisition Story Continued...



looked at river frontage, buffer quality, rare plants and animals and other factors to identify those properties with the highest conservation values. In the end the Bingham Lands were, by far, the highest conservation priority along the Uwharrie River. The site contains nearly five miles of river frontage, another 32,000 feet of crystal clear tributaries, mature hardwood buffers and a significant occurrence of white pines, all while linking together four isolated parcels of the Uwharrie National Forest. Crystal returned to The LandTrust staff just in time to see the culmination of efforts to protect this spectacular property. “Although we believed the property was special to begin with, to see it rank as the single most important piece of land in this corridor and then to return to see it protected is truly an amazing and unique experience,” she states.

The Bingham Lands provide the backdrop for some of Piedmont North Carolina’s best paddling stretches. A popular

local launching site, Low Water Bridge has provided access for several generations of canoers, kayakers and fishermen. The stretch of Uwharrie River downstream winds through a combination of Uwharrie National Forest and private lands, yet not one house can be seen from the water. Cross under Highway 109 and continue downstream and you’ll join the Yadkin River just across from Morrow Mountain State Park, where the two converge to form the Pee Dee River.



*Hikers enjoy a break beneath the canopy of the Bingham Lands.*

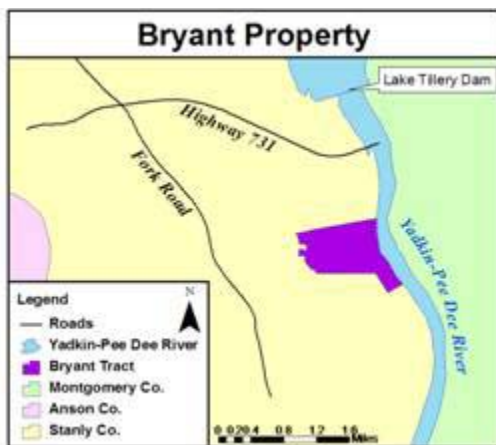


Funding for this project was made possible through the N.C. Ecosystem Enhancement Program (EEP) and contributions from Bill and Nancy Stanback, and Fred and Alice Stanback. The LandTrust would also like to thank the prior owners of their property: Max and Ruth Bingham, Thad and Mary Bingham, and Jack and Peggy Bingham Sparks. As Executive Director Jason Walser affirms, “this tremendous conservation achievement could not have happened without the patience, commitment and generosity of all these individuals.”

# Bryants Place Easement on “Three Eagles Sanctuary”

Ron and Nancy Bryant take their environmental commitment very seriously. They serve in numerous environmental organizations. They attend events to support environmental causes and are outspoken proponents of land and water conservation in the region. Now, through a conservation easement donation on their southern Stanly County farm, the Bryants have put their land where their mouth is.

The Bryant’s 169.7 acre property consists of productive agricultural fields, upland mixed hardwood forests, beaver swamps, and bottomland hardwoods along nearly 2/3 of a mile on the Pee Dee River.



As you travel down the winding paths to the river, you’re certain to spot some interesting flora and fauna along the way. The first stop by a creek reveals monarch caterpillars, spotted bee balm, and tadpoles. In the forest, a yellow-billed cuckoo sings from a treetop, and fruits dangle from a nearby paw paw. One massive beaver swamp is flooded with American lotus, the huge flowers overwhelming the pond on which they float. The best is last, though, as you settle down on the river banks, you’re almost guaranteed an eagle will soar by majestically, flapping his wings to the tune of the lapping water.

That bird may even be one of the namesakes of Three Eagles Preserve. After much searching, Ron and Nancy knew they’d found their home when they peered from the banks across the mighty Pee Dee and saw first one eagle fly downstream, then another upstream, and lastly one dive – marking the sign of the cross. Ron and Nancy have dedicated a small room ad-



*Blooming American lotus cover a beaver pond.*

junct from their house as a sanctuary for Lutheran ministers to take sabbatical.

This house is an energy efficient roundhouse. Its shape is more aerodynamic which prevents drafting, provides less wall space for heated or cooled air to escape through, and also takes less lumber to build. The Bryants have photovoltaic panels for solar power that they eventually hope will run the whole house, and a highly efficient HVAC unit, as well.

“It’s a real pleasure to work with landowners with their conservation ethic and who are so excited about land and wildlife,” says Uwharrie Conservation Specialist Crystal Cockman. Worlds apart from their previous existence in the bustling metropolis of Charlotte, with their beautiful piece of land and their environmentally conscious housing and lifestyle choices, Ron and Nancy have now taken the final step to protect their property for perpetuity. Now the rolling agricultural fields, mature forests, and wetland areas will remain a safe haven for beaver, heron, eagles and more for generations to come.



*Ron and Nancy Bryant with staff members Kevin Redding and Crystal Cockman.*

# "The Homeplace Farm" Protected in Davidson County

The LandTrust is proud to announce the protection of its third property in Davidson County, The Homeplace Farm. This 92 acre conservation easement protects some beautiful hardwood forests, the scenic viewshed of a half a mile of road frontage along Pickett Road, and the Reedy Creek Watershed. Additionally, it is home to the Old Leonard School House, the first school house located in the pastoral town of Welcome, North Carolina.

The Homeplace Farm takes its name from the fact that the owner, Billy Joe Kepley, was born and raised here. This property is located in the Reedy Creek Watershed, which is an area experiencing an increase in development. As a result of



*Landowner Billy Joe Kepley and Bern Schumak with CWMTF walk the property.*

this pressure, his close ties to the area and its agricultural heritage, Mr. Kepley decided to place a conservation easement on his property. "In my life I've made little decisions and big decisions. This is one the best big decisions I believe I've ever made," Kepley states. He hopes that it will inspire others in Davidson County to protect their farms, as well. The LandTrust welcomes his willingness to host educational and outreach events on his property in the future, so look for these events in coming newsletters. Partial funding for the transactional costs of this project came from the N.C. Clean Water Management Trust Fund (CWMTF).



*The Old Leonard Schoolhouse*

## Stanly County Farm Protected

### *Mauney Farm Extends Farmland Preservation Efforts*

The LandTrust has recently completed a farmland protection project on a 75 acre farm owned by Ritchie Mauney. Located in the Millingport community of northern Stanly County, this project compliments past and ongoing farmland projects that are occurring in the area.

Nearly all of the 75 acres are actively farmed producing corn and soybeans from the rich Stanly County soil. Funding for this project was made possible through the USDA's Farm and Ranch Lands Protection Program.



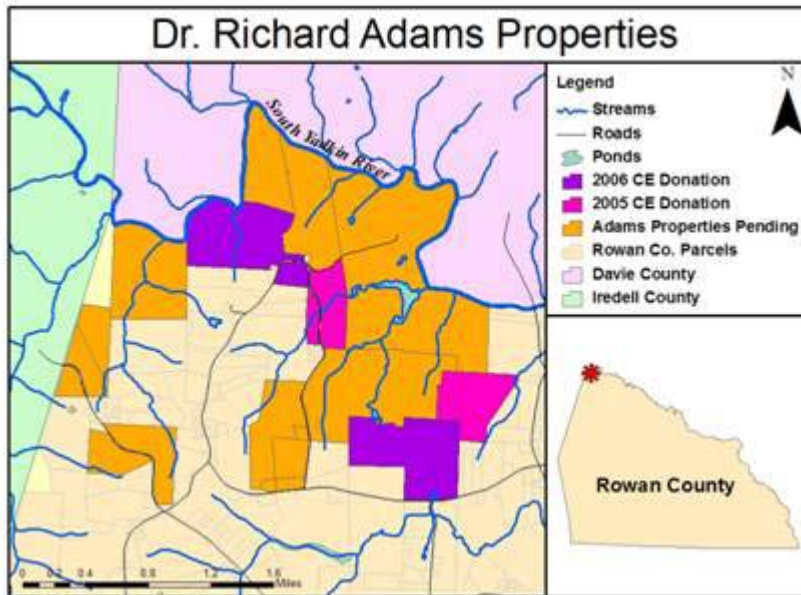
For more information on this property and all our other land protection projects, please check out our Protected Properties page on our website located at:  
[www.landtrustnc.org/projects.asp](http://www.landtrustnc.org/projects.asp)

# Second Phase of Adams Farm Protection Efforts

Dr. Richard Adams has now completed his second conservation easement donation to The LandTrust.

Dr. Adams recent conservation easement donation totaling 346 acres compliments the donation he made last year and brings the total size of protected property to 531 acres. However, Dr. Adams does not plan to stop his efforts there.

In all, Dr. Adams owns over 2,400 acres in northwestern Rowan County, with a portion spilling over into Iredell County. This impressive property contains nearly eleven miles of stream frontage, six of which are on the South Yadkin River. He plans to work with The LandTrust to protect the remaining acreage in the near fu-



ture. Once completed, this will be the largest conservation easement held by The LandTrust. Each property that Dr. Adams has so graciously protected is distinctive, but the network of protected lands he is developing promises to provide an important large-scale habitat truly unique to the region.

## Grigg Property Conserved

As much joy as the beautiful farmland brings to her life, Margaret Grigg simply could not stand the thought of it ever being developed. She loves watching the cattle gather in the fields, the birds commuting between the forest and the ponds and the daily surprise of new blooms adorning her ornate flower gardens. That's why she enlisted the help of The LandTrust to ensure that future generations will always be able to enjoy this gorgeous property much as it is today. By donating a conservation easement that will permanently guard against such development, she's now protected these 55 acres she holds so dear. As Margaret so subtly suggests, "I just wanted to do my part."

The Grigg Farm is primarily pastureland worked by a local farmer. The rolling



topography provides picturesque views of the southern Stanly County landscape. In the bottomlands, Little Long Creek drains towards its confluence with the Rocky River. These characteristics make for a beautiful piece of farmland that The LandTrust is happy to help Margaret protect.

# Historic Cowan Farm Protected

With the protection of the Cowan-Wagoner House, which was built circa 1810, The LandTrust has now protected three of the oldest properties in Rowan County. The other two properties are the Alexander Long House, built around 1783, and the Michael Braun House, built around 1766.

The historic Cowan-Wagoner farm and frontier property was received by John Cowan in 1774. Sally Murphy now owns the 121 acres around the Cowan-Wagoner House, where she grew up and still lives today. The historical importance and her strong family ties to the land led her to place a conservation easement on this significant property.

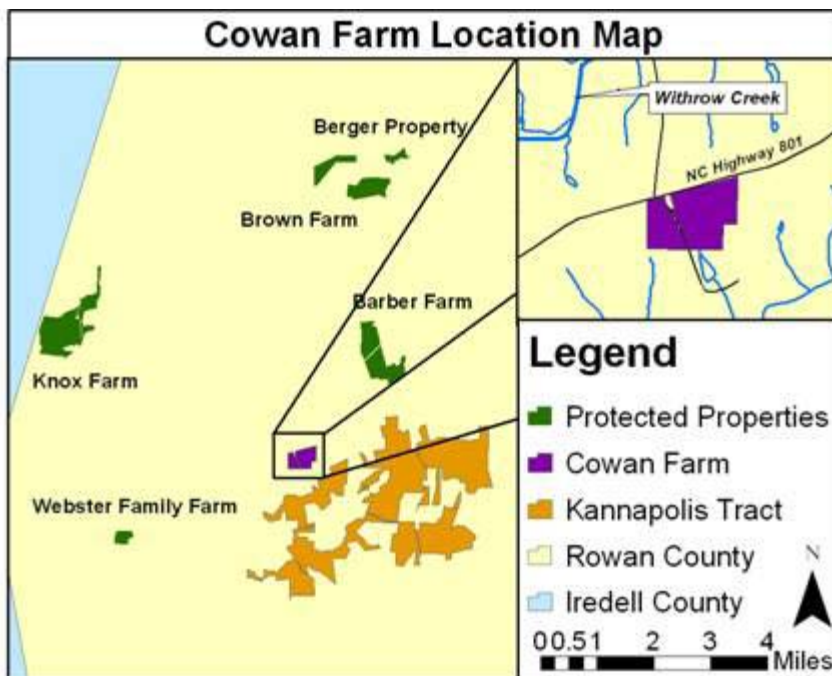
The Cowan farm is nestled in an important area where a lot of exciting conservation activities are occurring. This



property nearly borders the Kannapolis Lands Project, which the LandTrust and the N.C. Wildlife Resources Commission are acquiring. The farm is also within several miles of other farms protected by The LandTrust. In addition, the Piedmont Research Station is just two miles west of it.

This beautiful farm was recognized by Land and Farm Magazine as one of the

outstanding properties of Rowan County. The importance of this land is also evident by how highly the property ranked on our Land Protection Criteria, which indicates its high conservation value. The LandTrust has been working with Ms. Murphy since 2002, and she continues to be a strong voice for land and water conservation in her local community.



## Online Giving Now Available!

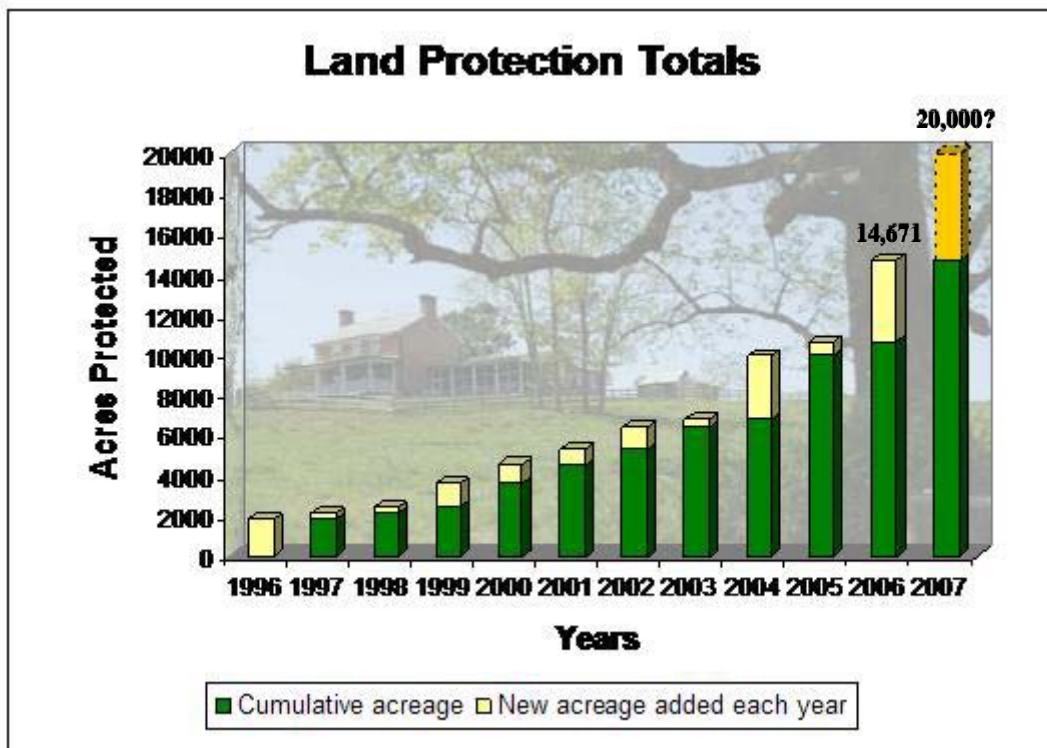
Now it is easier than ever to give using our online giving page on our website: [www.landtrustnc.org/online\\_giving.asp](http://www.landtrustnc.org/online_giving.asp). Thanks for supporting The LandTrust!

## Photo Recognition: Bob Bailey

The LandTrust would like to thank photographer Bob Bailey for the beautiful pictures of the Bingham Lands, Canoe Trip, and Historic Cowan Farm.



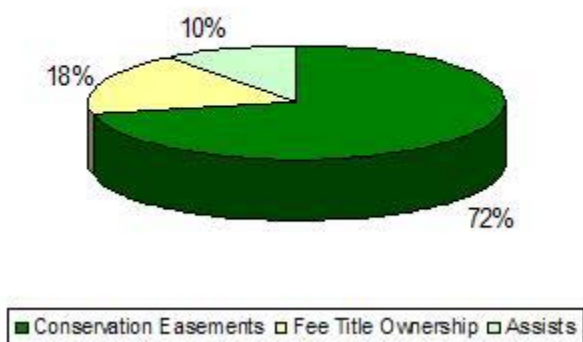
# The LandTrust Reaches Over 14,000 Acres Protected!



If you want to know if The LandTrust has been busy this year, you don't have to look very far to find the answer. Many people don't realize how much time and effort goes into even the smallest of projects, and each and every project that The LandTrust completes has a wonderful story and purpose. This year, we were fortunate enough to complete a number of larger projects, many of which have been in the works for several years.

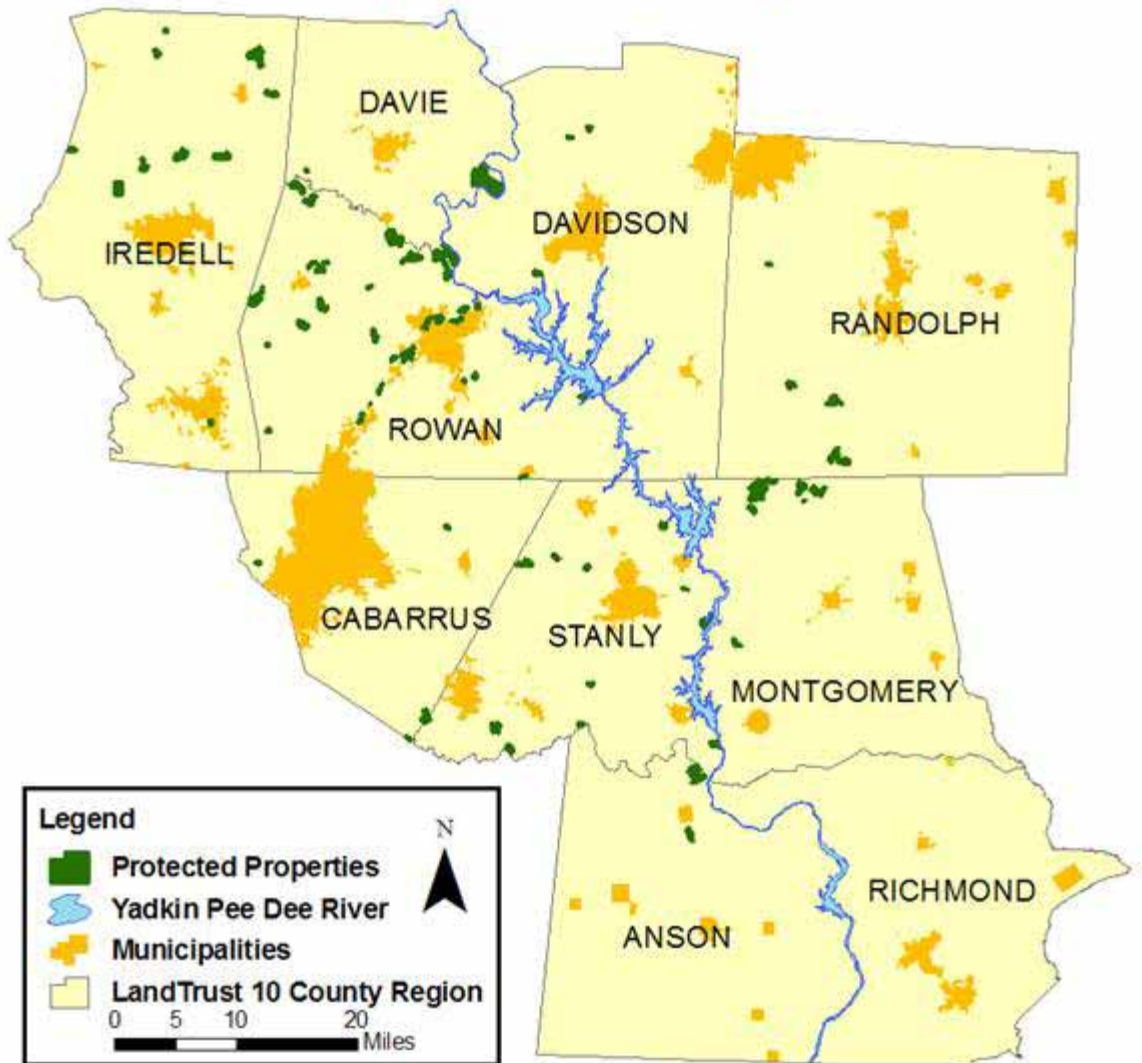
Right now is a pivotal time for conservation. What occurs over the next 10 to 20 years is going to dictate the face of our natural landscapes forever. The decisions about what to conserve and where are not easy ones to make, and similarly conservation successes are not easily quantified. Although the above chart reveals how quickly we are working to save these landscapes, what it doesn't show is the beauty of the smallest pastoral farm protected, the value of clean water, or the preservation of endangered aquatic invertebrates, and a thousand other individual environmental benefits too large to count. Like most of the really important things in life, you cannot truly realize the value of these natural wonders until they are gone.

### Land Protection Accomplishments by Type



But together with landowners and supporters like you, The LandTrust can continue working towards the protection of these important features before it is too late. Whether you grew up in this area, value it for recreation, or drive by it on your daily commute and delight in its beauty, The LandTrust prides itself in helping **Save The Places that You Love**. We are continually grateful for the dedicated board of directors, landowners, volunteers and supporters that make our work so rewarding.

## Protected Properties To Date (14,671 Acres)



### *A Sampling of our Previously Protected Properties:*



*Wesfell Preserve  
Stanly County*

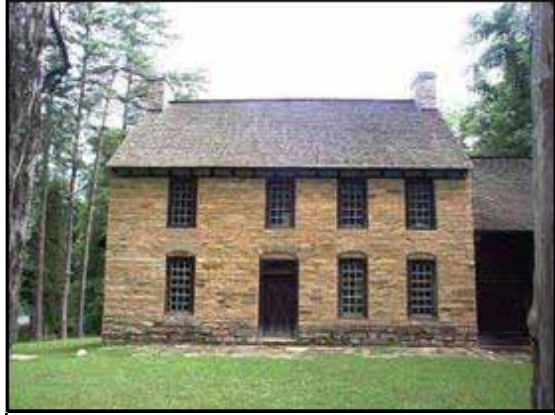


*Cooleemee Plantation  
Davie County*

## *Historic Preservation:*



*Pisgah Covered Bridge  
Randolph County*



*Michael Braun House  
Rowan County*

## *Special Natural Areas:*



*Schweinitz's Sunflower—Blair Tract  
Montgomery County*



*Bishop EEP Buffer  
Anson County*

## *Working Farms and Forests:*



*John Bunyan Green Farm  
Cabarrus County*



*William Templeton Tract  
Iredell County*

# Planned Giving Options

Want to leave a legacy? Isn't leaving a better world behind for future generations the ultimate legacy? There are lots of ways you can help The LandTrust protect the water quality, wildlife habitat, farmland, and scenic vistas of the Piedmont. The following planned giving possibilities can assist you in making a permanent impact on our region even if you don't consider yourself financially able to do something so extraordinary.

- **Gifts of Cash** – are fully deductible up to 50% of your adjusted gross income in the year of gift, and any remainder can be carried forward up to 5 additional years.
- **Gifts of Stock** – if you own the stock one year or longer, you can take an income tax deduction and avoid paying capital gains taxes.
- **IRA's and Pension Plans** – make The LandTrust a beneficiary of your IRA, pension, 401(k), or other retirement savings plan and save income and estate taxes. Just a small percentage could help The LandTrust protect hundreds of acres.
- **Real Estate Gifts** – can be transferred by deed with no liability for income or estate taxes on appreciated value. The LandTrust can accept lands for protection or gifts of land for resale and the money put towards conservation, if the donor wishes.
- **Life Insurance** – can also be given to The LandTrust as a tax deductible gift.
- **Bequests** – you can make The LandTrust a beneficiary in your will with an outright gift or after other sums are paid to specified individuals.
- **Charitable Gift Annuities** – by transferring assets into a charitable gift annuity, you can keep a fixed income for life and take advantage of tax benefits right now.
- **Charitable Remainder Trusts** – allow you to place assets in a trust that pays money to you for your lifetime, you can give charitable donations, and avoid capital gains and estate taxes, and then transfers these assets to The LandTrust upon your death.
- **Charitable Lead Trusts** – allow you to place your assets in a trust which will pay money annually to The LandTrust for a specified length of time and then the assets go to your heirs.

The LandTrust recommends that you consult with your own legal and financial advisors to find the most suitable gift options for you, to maximize your financial benefits and tailor them to your individual needs. As always, we offer our sincere thanks to you for helping us keep **Saving the Places You Love**.

## Volunteer Land Steward Opportunity

The LandTrust has over 100 protected properties across our ten-county region totaling over 14,500 acres and we are looking for some dedicated, enthusiastic individuals to assist our staff with land stewardship obligations. Volunteer Land Stewards would accompany LandTrust staff to conduct annual monitoring visits, develop baseline documentation reports, and assist with basic maintenance and boundary posting. The LandTrust will be offering Volunteer Land Steward training days on Tuesday March 20<sup>th</sup> at 3:30pm at our Historic Lawrenceville Tract in Montgomery County and on Thursday March

29<sup>th</sup> at 3:30pm at our Bittering Farm in Davie County. If interested, or for more information, please contact Stewardship and Land Conservation Coordinator Connor Coleman at [connor@landtrustenc](mailto:connor@landtrustenc).



# New Corporate Partner Benefits!

Would you like your company logo to appear on The LandTrust's newsletter and website? How about treating your employees to an exclusive hike on one of our conserved properties? Or receive a special award, promoted to local media, recognizing your company's commitment to land conservation?

These are just a few ways your business can benefit from a corporate partnership with The LandTrust. Through the years we have received support from many corporations. To them we say, "Thank you." To all the other businesses and professionals in our service area, we say, "We need you."

This year The LandTrust will emphasize corporate partnerships to support our ongoing, and growing, operational needs. What does your business receive for a donation to The LandTrust? Well, actually, quite a lot.

Our new "Corporate Partnership Recognition" program can be viewed on our website at [www.landtrustcnc.org](http://www.landtrustcnc.org). Go to the "Giving" section and click on the link for the "Corporate Partnership Recognition" program. Or call Andrew Waters at 704-647-0302 to receive a copy via fax or e-mail. "We know that many of our business people and professionals support the ongoing work of the LandTrust. Many of them donate to us regularly through individual memberships," says LandTrust Executive Director Jason Walser. "But many aren't aware of the ways we can partner with their businesses to promote our shared values to their customers. One of our priorities for this year is to proactively inform businesses about these opportunities, so please don't be surprised if someone from The LandTrust calls your business or knocks on your company door in 2007. We need the support of area businesses now more than ever."

## Corporate Membership Benefits Include\*

### Trailblazer (\$1,000)

- Two RiverDance tickets
- Newsletter & Website Recognition

### River Defender (\$2,500)

- Two RiverDance tickets
- Newsletter & Website Recognition
- Press Release Announcement

### Order of the Yadkin (\$5,000)

- Two RiverDance tickets
- Newsletter & Website Recognition
- Recognition plaque presented at RiverDance
- Press Release Announcement
- And More...

### Order of Daniel Boone (\$10,000)

- Two RiverDance Tickets
- Newsletter & Website Recognition
- Recognition plaque presented at

### RiverDance

- Press Release Announcement
- Radio Recognition
- Exclusive Hike on Protected Property
- Free attendance for 15 employees to event of choice
- And More...

### Piedmont Pioneer (\$20,000)

- Two RiverDance Tickets
- Newsletter & Website Recognition
- Recognition plaque presented at RiverDance
- Press Release Announcement
- Even More Radio Recognition
- Two Exclusive Hikes on Protected Property
- Free attendance for 15 employees to event of choice
- And More...

*\*For a complete list of corporate benefits, please visit our Website or call the office.*

## Corporate Grant Received

The LandTrust would like to thank The Alcoa Foundation for its generous support of our Kannapolis Lands Project. A grant in the amount of \$15,000 was awarded this past September. These funds are designated for transactional expenses associated with the project. Please join us in thanking The Alcoa Foundation for helping Save the Places you Love.

## Uwharrie Canoe Trip



The leaves were at peak colors, the skies were clear and the sun was high and warm. It could not have been planned any better; the weather was perfect, the group was blissful, and no one fell out! On Saturday October 28<sup>th</sup> almost 30 LandTrust supporters gathered on the bank of the Uwharrie River at Burney Mill Road in Randolph County and set off in a fleet of canoes and kayaks outfitted by the Uwharrie River Company out of Mount Gilead.

Rainfall from the previous evening raised the water level just enough to allow for an easy voyage. The capstone final stretch was past the newly protected 1,160 acre Bingham Lands acquisition. After taking out at Low Water Bridge in Montgomery County, a few trip-goers opted to take a hike and enjoy more beauty that the Bingham property has to offer. Be on the lookout for future Uwharrie River trips, this fan favorite is sure to be offered again!

## Uwharrie Mountain Hike

“How strenuous is strenuous?” That was the question asked by all before we set out on The LandTrust’s first “strenuous” rated hike. By the end of the excursion they would know the answer. The eleven adventure seekers met at Yates Place campground in the Uwharrie National Forest in Montgomery County on Saturday December 9<sup>th</sup> and set off bright and early to embark on our trek. The air was brisk and in the upper 40’s but the sun was shining and graciously illuminated the Uwharrie landscape. From Yates Place we headed to the Uwharrie Trail and then picked up the Dutchman’s Creek Trail where we had lunch atop Lick Mountain, which provided us with a breathtaking view of the oldest mountain range in the



country. Eleven miles and five hours later everyone had learned the answer to their initial question. Most were tired, some were sore, but all asked when the next “strenuous” hike would be so that they could be sure to get it on their calendars.

# LandTrust Hosts Fourth Annual Environmental Tree Lighting

Environmentally friendly ornaments and candles were on display on the Salisbury Greenway on Monday, November 27th for the 4th Annual Salisbury Tree Lighting Event, sponsored by The LandTrust for Central North Carolina.

Fourth grade students from Granite Quarry Elementary School, Isenberg Elementary School, and North Hills Christian School decorated the trees with handmade ornaments. The event featured welcoming remarks by Salisbury Mayor Susan Kluttz, followed by carols and fellowship.

“With the ever-increasing commercialism of Christmas, the Salisbury Tree



Lighting is a great way for families to reconnect to nature and the true meaning of the season,” says Jason Walser, LandTrust Executive Director. The tree lighting event occurs on the Catawba College Ecological Preserve, permanently protected by a conservation easement.

Barbara Lawther, LandTrust Development Director, notes the event is a great way to teach area students about the need to protect wildlife habitats. “The care they take protecting the animals celebrates the spirit of hope during this special time of year.”



## Upcoming Excursions and Events

- **LandTrust Office Open House ~ January 18 ~ 4:00pm**  
215 Depot Street in Salisbury. Light hors d'oeuvres and drinks.
- **Environmental Education Event ~ February 17 ~ 10:00am**  
Catawba College Center for the Environment; Rowan County. Led by Lisa Wear.
- **Strenuous Wilderness Hike ~ March 3 ~ 10:00am**  
Birkhead Wilderness Area; Randolph County. Strenuous 10 mile hike. Led by Connor Coleman.
- **Morrow Mountain Hike ~ March 31 ~ 2:00pm**  
Morrow Mountain State Park; Stanly County. Moderate 4-5 mile hike. Led by LandTrust Staff.
- **Nature Extravaganza ~ April 21 ~ 10:00am**  
Bingham Lands Property; Montgomery County. Led by Mark and Jane Lewis.
- **South Yadkin Birding Canoe Trip ~ May (Date to be determined)**  
South Yadkin River; Rowan/Davie Counties. Led by Dr. Joe Poston. Space limited to 20.

Please RSVP to [connor@landtrustcnc.org](mailto:connor@landtrustcnc.org) for all field trips.

Check out our website for more detailed descriptions of field trips and events:  
[www.landtrustcnc.org/calendar\\_events.asp](http://www.landtrustcnc.org/calendar_events.asp)

# Kudos To Our Supporters!

Your donations will allow us to continue “Saving the Places You Love” in the Piedmont Region. The following are new(\*) or renewing members from **January 1, 2006** through **December 31, 2006**. Every effort has been made to ensure that these names are correct. Should there be an error, or if you have questions or comments, please contact us at 704.647.0302.

## **Heartland 100 (Golden Oak)** **\$5,000 and up**

Alcoa Foundation  
Mr. and Mrs. William Marc Graham  
Ms. Amy Grissom  
The Mary Shaw May Family  
Mr. and Mrs. Fred Stanback, Jr.  
Mr. and Mrs. William C. Stanback

## **Heartland 100 (Maple)** **\$2,500 - \$4,999**

Ms. Theresa Bridges  
Mr. and Mrs. Edward Henry Clement

## **Heartland 100 (Dogwood)** **\$1,000 - \$2,499**

Ms. Frances Cannon  
Mr. and Mrs. Ronald E. Chaney  
Mr. and Mrs. Robert L. Cook, Jr.  
Mr. and Mrs. John J. Davis  
F&M Bank  
F&M Investment Services  
First Charter Bank  
The Fisher Companies  
Ms. Ruth Ann Grissom and  
Dr. Marcus Plescia  
Mr. Peter Wilson Hairston  
Mr. and Mrs. Robert Hazen  
Dr. and Mrs. Dennis L. Hill  
Mr. and Mrs. Gordon Pannill Hurley  
Mr. and Mrs. James Franklin Hurley III  
KMD Construction Company  
Mr. and Mrs. Ross William McCanness  
Mr. and Mrs. James R. Mauney  
Mr. and Mrs. Edward Proctor Norvell  
Power Curbers, Inc.  
Dr. and Mrs. Robert B. Scott\*  
Mr. Bruce Rufty  
Shaver Wood Products  
Mr. Bobby C. Sheets  
Mr. and Mrs. Jerry F. Smith  
Mr. and Mrs. Mark Steven Smith  
Mr. and Mrs. Robert B. Smith, Jr.  
Mr. Bradford G. Stanback and  
Ms. Shelli Lodge-Stanback  
Statewide Title, Inc.  
Uwharrie Farm  
Wallace Realty Company  
Mr. and Mrs. Mike Walter  
The William W. Webb Family  
Mr. and Mrs. James G. Whitton  
Mr. and Mrs. Dan R. Williams  
The Mary and Elliott Wood Foundation  
Woodson Sayers Lawther Short Parrott  
and Walker

## **\$500 - \$999 (Benefactor)**

Anonymous  
Bank of North Carolina  
Mr. and Mrs. Raymond D. Coltrain  
Mr. and Mrs. J. Keith Crisco  
Mr. and Mrs. Robert O. Ebert  
Mr. and Mrs. Chalmers Glenn  
Mr. and Mrs. Sanders Emerson  
Goodman  
Dr. and Mrs. Arthur Harberts  
Mr. and Mrs. Joel Shelton Harper  
Dr. and Mrs. Louis Kandl

Mid South Tractor Company  
National Starch and Chemical  
Foundation  
Dr. Lloyd Nickerson  
Mr. and Mrs. William B. Pitt  
Ms. Vivian R. Penry  
Ms. Janice Query  
Mr. Robert S. Segal  
Mr. and Mrs. Edward V. Smith  
Mr. Harley R. Smith  
Dr. Mark T. Stanback and  
Ms. Nancy Popkin  
Mr. Richard Starrett  
Dr. and Mrs. Charles Steinman  
Mr. and Mrs. C. H. Timberlake, Jr.  
Mr. and Mrs. Bradlee Walser

## **\$250 - \$499 (Patron)**

A Step in Time  
Mr. and Mrs. Andrew J. Abramson  
Mr. and Mrs. Joseph F. Antosek III  
Mr. and Mrs. Stephen M. Antosek  
Mrs. M. B. Bishop, Jr.  
Mr. and Mrs. Benjamin H. Bridges III  
Representative Lorene Coates  
Ms. Mary C. Criddlebaugh  
Mr. and Mrs. Addison Davis  
Mr. and Mrs. Samuel F. Davis, Jr.\*  
Mr. Nereus C. English III  
Mr. Jack Errante  
Ms. Martha M. Hawkins  
Mr. and Mrs. William Dudley Kenerly  
Mr. and Mrs. Timothy C. Klaus  
Mr. and Mrs. John F. Lipe  
Mrs. John Harris Morrison\*  
Mr. and Mrs. Michael T. North  
Dr. and Mrs. Gary H. Parks  
Mr. and Mrs. William P. Pope  
Mr. and Mrs. Robert E. Pruehsner  
Mr. and Mrs. Richard R. Reamer  
Dr. and Mrs. James M. Rhyne  
Reverend George Slaton  
Mr. and Mrs. Dan G. Smith  
Mr. and Mrs. Lee Snow  
Mrs. Francis Montgomery Steele  
Mr. and Mrs. Charles David Taylor, Jr.  
Mr. and Mrs. Kenneth E. Vaughn  
Mr. and Mrs. Jason Albert Walser  
Ms. Sue Carter Walser  
Dr. John E. Wear, Jr.  
Dr. and Mrs. John C. Webb  
Dr. and Mrs. William Whitaker  
Webb, Jr.

## **\$100 - \$249 (Sustaining)**

Mr. and Mrs. David W. Alexander  
Mr. and Mrs. Mark Alexander  
Mr. Thomas A. Allison  
Dr. and Mrs. Jeffrey Baker  
Mr. and Mrs. Ralph L. Baker  
Mr. and Mrs. John Bates  
Mr. and Mrs. M. J. Barger  
Dr. and Mrs. Ronnie Barrier  
Mr. and Mrs. Michael Stephen Bauk  
Mr. and Mrs. Bryce P. Beard III  
Mr. and Mrs. Clarence B. Beaver, Jr.  
Mr. and Mrs. Charles A. Bernheim  
Dr. and Mrs. Norman Hurst Bertels\*  
Dr. and Mrs. Robert Bertram

Mr. Edward E. Birkinshaw, Jr.  
Dr. and Mrs. Wilbert W. Blackman  
Mr. and Mrs. Malcolm B.  
Blankenship, Jr.  
Mr. and Mrs. Steve Blount  
Mr. Rex R. Boner  
Mr. and Mrs. Charles Bartow Branam IV  
Ms. Linda Brisbin  
Dr. and Mrs. John H. Bumgarner  
Colonel John S. Cadwallader\*  
Mr. and Mrs. Kent G. Callahan  
Mr. and Mrs. John R. Casey  
Mr. and Mrs. Thomas C. Childress  
Mr. and Mrs. David S. Clay  
Mr. and Mrs. Douglas Cline  
Dr. and Mrs. Stephen Colwell  
Mr. and Mrs. Allen DuBose Cook  
Reverend Dr. Cathy A. Cook and Mr.  
Kenneth E. Criffield  
Mr. and Mrs. William S. Coxe  
Mr. and Mrs. Allen K. Craven  
Mrs. Fred T. Craven\*  
Mr. and Mrs. David A. Craver  
Dr. and Mrs. Pierre d'Hemecourt\*  
Mr. and Mrs. Tim Deal  
Mr. James Dillon  
Ms. Lynda H. Douthett  
Dr. and Mrs. Frederick Mast Dula  
Dr. and Mrs. N. Windsor Eagle\*  
Mr. and Mrs. Harold C. Earnhardt  
Miss Jessica T. Eaton  
Mr. and Mrs. Lawrence Allen Edwards  
Ms. Melissa Eller and Mr. Steve Shive  
Mr. and Mrs. James Epting\*  
Mr. and Mrs. Richard Everson  
Mr. and Mrs. Charles W. Elliott  
Ms. Catherine Goodman Farley\*  
First National Bank of Asheboro  
Mr. and Mrs. Jim Foltz  
Honorable and Mrs. Larry Grant Ford  
Mr. Jimmy Forrest  
Ms. Laura Hays Frazier  
Mr. and Mrs. Tyler Frick  
Mr. and Mrs. Tommie T. Gamewell  
Mr. and Mrs. Keith D. Gapan  
Mr. and Mrs. C. Layton Getsinger  
Mr. and Mrs. Dale E. Gentle  
Mr. and Mrs. Edgar W. Gettys  
Ms. Amanda C. Gibson  
Ms. Adele Marie Goodman  
Mr. and Mrs. Francis Edward Goodman  
Mr. and Mrs. Richard Park Goodman  
Mr. and Mrs. Benjamin Goodman  
Mr. and Mrs. Cress Edward  
Goodnight III  
Mr. and Mrs. C. E. Goodnight, Jr.  
Dr. and Mrs. Joel S. Goodwin  
Mr. and Mrs. James Beall Graham  
Mr. and Mrs. Gordon A. Grant III  
Mr. and Mrs. Alex Grenoble  
Reverend and Mrs. Thomas L. Griffis  
Ms. Margaret F. Grigg  
Dr. and Mrs. James Hardin  
Mr. and Mrs. John M. H. Hart  
Mr. and Mrs. T. Burt Harris\*  
Mr. and Mrs. Jerry R. Harviel  
Mr. and Mrs. M. Thomas Hatley, Jr.  
Mr. and Mrs. Darrius Hedrick  
Dr. and Mrs. Jerry Hill, Jr.



Mr. and Mrs. Robert C. Hinkle, Jr.  
 Mr. and Mrs. Jason Holt  
 Mr. and Mrs. Joel Hubbard  
 Mr. Glenn E. and Dr. Jennifer G. Hudson  
 Mr. John T. Hudson  
 Mr. and Mrs. Richard Long Huffman  
 Dr. and Mrs. Robert S. Humble\*  
 Mr. and Mrs. Joel Huneycutt  
 Mr. and Mrs. J. Edwin Hunter  
 Mr. and Mrs. William Robyn James  
 Dr. and Mrs. Andrew S. Jeter  
 Dr. and Mrs. Atlee Rollins Johnson III  
 Dr. and Mrs. David Jones  
 Mr. and Mrs. Larry O. Jones  
 Dr. and Mrs. Richard D. Jordan  
 KKA Architecture  
 Dr. and Mrs. Douglas Kelling\*  
 Mrs. Robert Kellogg  
 Mr. and Mrs. J. Don Kepley  
 Mr. and Mrs. Glenn Elwood Ketner, Sr.  
 Mr. and Mrs. Vernon Ketron  
 Mr. and Mrs. Timothy Klaus  
 Honorable and Mrs. William C. Klutz, Jr.  
 Dr. and Mrs. Robert E. Knott  
 Mr. and Mrs. George Knox  
 Ms. Jeanette B. Lassiter  
 Raymond L. Lassiter, DDS\*  
 Mr. and Mrs. Herbert L. Lawton  
 Mr. William R. Lee  
 Mr. and Mrs. Don W. Leonard  
 Mr. and Mrs. Mark D. Lewis  
 Mr. and Mrs. John F. Lipe  
 Ms. Mary Lou Lipscomb  
 Ms. Ruby Craig Long  
 Dr. Deborah M. Lucas and Mr. Richard Lewis  
 Mr. and Mrs. Robert Luck  
 Mr. and Mrs. Thomas R. MacMillan  
 Mr. and Mrs. Richard J. McGuire  
 Dr. and Mrs. Edward McKenzie  
 Mrs. Rebecca Reitz McKinley  
 Ms. Janet Magaldi  
 Mr. Blair Matthews  
 Mr. William Mayberry\*  
 Mrs. Paul Meech  
 Mr. Maximilian Atlas Merrill  
 Mr. and Mrs. Jeffery Michael  
 Mr. and Mrs. Clyde B. Mickle, Jr.  
 Mr. and Mrs. Peter J. Mooney  
 Mr. and Mrs. Enoch Anthony Nussman\*  
 Mr. and Mrs. Kevin M. Omellan  
 Mr. and Mrs. J. Foster Owen  
 Miss Alisa Palmer\*  
 Mr. and Mrs. Brent Parks  
 Mr. and Mrs. Stephen Edward Parrott  
 Mr. and Mrs. John McCrary Parrott  
 Mr. and Mrs. Alexander M. Patterson\*  
 Mr. and Mrs. Charles A. Peacock  
 Mr. and Mrs. Terry Pendleton  
 Mr. and Mrs. Branson Pethel  
 Mr. Kristopher Allen Pickler  
 Mr. Keith A. Powlas  
 Mr. and Mrs. David L. Pressly, Jr.  
 Randolph Bank  
 Mrs. Elizabeth V. Rankin  
 Miss Meredith Harmen Reamer  
 Mr. and Mrs. Kevin M. Redding  
 Mr. and Mrs. Ricky Joe Reich  
 Mr. and Mrs. Chancellor M. Reynolds  
 Dr. and Mrs. James M. Rhyne  
 Mr. and Mrs. John G. Riley  
 Mr. and Mrs. Charles Clifford Ritchie  
 Mr. Kent Roberts  
 Mr. and Mrs. Scott Robinson  
 Mr. and Mrs. Thomas Clinton Robins  
 Mr. and Mrs. Bobby L. Rusher  
 Safrit Landscape Construction Co.  
 Mr. H. Gregory Scarborough

Ms. Diane Scott  
 Mr. and Mrs. Albert Schneider  
 Mr. and Mrs. Thomas Sexton  
 Reverend and Mrs. Grant Sharp  
 Mr. and Mrs. David C. Shaver\*  
 Reverend and Mrs. Banks D. Shepherd  
 Mr. Jack M. Sherrill  
 Mr. and Mrs. Charles Shields  
 Mr. and Mrs. Barry Victor Shive  
 Mr. Barry Victor Shive, Jr.  
 Pam Westmoreland Sholar, M.D.  
 Mr. and Mrs. Ian Silversides  
 Mr. and Mrs. David F. Simmons  
 Mr. and Mrs. Horace E. Six-Means  
 Dr. and Mrs. David Skowronek  
 Dr. and Mrs. Norman R. Sloop  
 Dr. and Mrs. David N. Smith  
 Mr. Jeff S. Smith  
 Mr. and Mrs. Ray Smith  
 Mr. and Mrs. Walter L. Smith  
 Mr. and Mrs. Eddy L. Snow  
 Mr. and Mrs. Clifford Sorel  
 Mr. and Mrs. Charles L. Sowers  
 Mr. and Mrs. Maxwell K. Spear, Jr.  
 Mr. and Mrs. John Robert Spencer\*  
 Mr. and Mrs. Joseph Srail  
 Mr. Gene Starnes  
 Dr. and Mrs. Robert Gibson Steele  
 Mr. Arthur K. Steinberg and Ms. Jane Smith-Steinberg  
 Mr. and Mrs. Ned A. Storey  
 Mr. and Mrs. David W. Swaim  
 Dr. Sandra Swanson and Mr. Craig Hunley  
 Mr. and Mrs. Dennis Testerman  
 Ms. Delores A. Thomas  
 Dr. and Mrs. Willard Ray Thompson, Jr.  
 Mr. and Mrs. William Tippet  
 Bill Truitt Wood Works, Inc.  
 Mr. Chris Verner  
 Mr. and Mrs. E. Walter Wagoner  
 Mr. and Mrs. W. Price Wagoner II  
 Mr. and Mrs. Gary Walker  
 Ms. Louise R. Walser  
 Mr. and Mrs. Andrew Waters  
 Dr. and Mrs. William Whitaker Webb III  
 Mr. and Mrs. Donald C. Webster  
 Mr. and Mrs. Dennis A. Wenker  
 Mr. and Mrs. Jason Wenker  
 Mr. and Mrs. J. Jay Whittington  
 Mr. and Mrs. Scott Whittington  
 Ms. Shelley C. Williamson  
 Dr. and Mrs. Edwin G. Wilson  
 Mr. and Mrs. David Wood  
 Mr. and Mrs. Leonard Wood  
 Mr. and Mrs. Robert H. Wright  
 Ms. Jean M. Wurster  
 Mr. Braxton L. Young  
 Mr. and Mrs. H. Darrell Young

**\$50 - \$99 (Family)**

Mr. and Mrs. Jacob Franklin Alexander, Jr.  
 Mr. and Mrs. Robert W. Bailey\*  
 Mr. and Mrs. Robert L. Baker, Jr.  
 Mr. Jon Barber  
 Mr. and Mrs. Oscar Brooks Barnhardt  
 Mr. and Mrs. Rick Barrier  
 Mr. John H. Beard  
 Mr. and Mrs. Clarence B. Beaver III  
 Mr. and Mrs. Kent Beck  
 Benchwarmers  
 Ms. Ann C. Boyd  
 Mr. and Mrs. William R. Burgin\*  
 Mr. and Mrs. Charles S. Brummitt  
 C-Optical, Inc.  
 Caniche, LLC  
 Mr. Angelo P. Capparella

Carolina Wetland Services, Inc.  
 Cartucci's Restaurant  
 Cut Up and Dye Hair Salon  
 Mr. and Mrs. Robert W. Charles  
 Mr. J. David Christenbury  
 Mr. and Mrs. Kenneth Clifton\*  
 Mr. and Mrs. Bucky Cline\*  
 Mr. and Mrs. Thomas Coble, Jr.  
 Mr. and Mrs. Donald Conner  
 Mr. and Mrs. Sam E. Correll  
 Mrs. Margaret Hannah Craven  
 Mr. Sean M. Donaldson  
 Downtown Graphics Network, Inc.\*  
 Mr. and Mrs. J. Robert Edwards\*  
 ERA Glover Realty  
 East Rowan High Junior Civitan Club  
 Fine Frame Gallery  
 Donald R. Fortner, Jr., DMD, P.A.  
 Frost Bites  
 Mr. and Mrs. William L. Garrison, Sr.  
 Miss Lillian Heitman Gascoigne  
 Ms. Martha Lou Gascoigne  
 Godley's Garden Center  
 Goodman Millwork  
 Mr. and Mrs. Walter H. Gordon  
 Mr. and Mrs. Rhett E. Greene  
 Mr. and Mrs. Alex Grenoble  
 Ms. Laura Matheson Gresham  
 The Hair Company  
 Mr. and Mrs. David N. Hall  
 Mr. and Mrs. Jonathan Palmer  
 Mr. and Mrs. Charles H. Harris, Jr.\*  
 Mr. Clyde H. Harris, Jr.  
 Mr. and Mrs. J. P. Helms  
 Mr. and Mrs. John Helms  
 Mr. John M. Henderlite  
 Mr. and Mrs. John V. Highfill  
 Mr. and Mrs. Paul Hinkle  
 Mr. and Mrs. Robert C. Hinkle, Jr.  
 Mr. and Mrs. Hoyle Holland  
 Mr. and Mrs. Michael M. Hollingsworth\*  
 Innes Street Drug Company  
 Mr. and Mrs. William C. Isenhour\*  
 Dr. and Mrs. James C. Johnson  
 Ms. Elizabeth C. Jordan\*  
 Mrs. Alice Hudson Ketcham  
 Ketner and Dees, Attorneys  
 Ms. Rebecca G. Kirkman  
 Honorable and Mrs. Constantine Kutteh  
 Las Palmas Restaurant  
 Mr. and Mrs. Thomas H. Langford  
 Mr. Mark Joseph Lashua  
 Mr. and Mrs. Larry R. Layton\*  
 Mr. Carroll Leggett  
 Lexington Garden Club\*  
 Mr. Randolph Lewis and Ms. Abigail Jennings  
 Dr. and Mrs. Mark Lins  
 Reverend and Mrs. I. Mayo Little  
 Mr. and Mrs. William J. McCoy  
 Mr. and Mrs. Tim McCree  
 Mr. and Mrs. Richard J. McGuire  
 Dr. and Mrs. Richard W. Martin  
 Mr. and Mrs. Edgar Miller  
 Mr. and Mrs. James M. Monroe, Jr.  
 Mr. and Mrs. Joe F. Morgan  
 Mr. T. Jefferson Morris  
 Mr. Edward J. Mulvey and Ms. Julia Bratton Riddle  
 Mr. and Mrs. John B. Murphy  
 Mr. and Mrs. Harold Hastings Newman III  
 Dr. and Mrs. Leon B. Newman  
 Mr. and Mrs. Jonathan Palmer  
 Mr. and Mrs. David Parker  
 Mr. and Mrs. John T. Peeler  
 Dr. Gaston Penry  
 Pleasant Papers, Inc.

Queen's Gifts  
 Mrs. A. E. Quesenberry  
 Quick Copy Print Shop  
 Mr. and Mrs. Roger L. Roark  
 Mrs. Hans Roemer  
 Mr. and Mrs. Bobby Rusher II  
 Salisbury Flower Shop  
 Salisbury Motor Company  
 Mr. and Mrs. Larry Shaw  
 Mr. and Mrs. D. Wayne Shepherd  
 Mr. and Mrs. Charles Sherrill\*  
 Mrs. Susan G. Sides  
 Miss Nancy Thompson Smith  
 Dr. and Mrs. James A. Smith  
 Dr. and Mrs. Ronald D. Smith  
 Dr. and Mrs. Whitman E. Smith, Jr.  
 Mr. and Mrs. James A. Sparks, Jr.  
 Speed Brite USA  
 Mr. and Mrs. Robert W. Stamey  
 SRHS Environmental Science Club\*  
 St. Paul's Lutheran Men  
 Mr. and Mrs. Ned Andrew Storey  
 Mr. and Mrs. Dennis E. Testerman  
 Textile Products  
 Ms. Arlene Edwards Thompson\*  
 Mr. and Mrs. Lloyd William Troxler, Jr.  
 Vogue Cleaners  
 Mr. and Mrs. Barry L. Walbourn  
 Mr. and Mrs. Walter Wall  
 WaterWorks Visual Arts Center  
 Miss Jamie D. Wenker  
 Mr. and Mrs. Alfred F. Welling, Jr.  
 Mr. Henry H. Westmoreland  
 Reverend and Mrs. Jerry P. Wilkes\*  
 Mr. and Mrs. Geof Wilson\*  
 Dr. and Mrs. Mark T. Wimmer  
 Windsor Gallery  
 Mr. and Mrs. Paul Bernhardt Woodson  
 Mr. and Mrs. Ronald G. Wray  
 Mr. and Mrs. John J. Yelton  
 Ms. Jewel Wolfe Ziprik

### **\$25 - \$49 (Individual)**

Mrs. Jacob Franklin Alexander  
 Mr. and Mrs. John G. Annas  
 Mr. P. Collins Barwick III  
 Mr. and Mrs. Harold G. Belk\*  
 Ms. Sarah G. Borders  
 Ms. Claudia Blair Bulthuis  
 Ms. Diana Burge  
 Mr. and Mrs. Matthew B. Carden  
 Mr. Leon Carter  
 Mr. and Mrs. David M. Chisholm\*  
 Mr. Wayne M. Cline\*  
 Mr. Alex C. Cousins  
 Mr. and Mrs. James C. Cowden  
 Mr. William H. Crowder  
 Ms. Vanda Lippert Crowell  
 Mr. and Mrs. Frank Dusch, Jr.  
 Mr. and Mrs. Eugene Earnhardt  
 Mr. Alton Louis Eubanks  
 Mr. and Mrs. Owen J. Furuseth  
 Mr. and Mrs. C. Layton Getsinger  
 Mr. and Mrs. Ezra C. Gilliam  
 Mr. and Mrs. Larry Morgan Gish  
 Mr. and Mrs. Charles H. Goldman  
 Mr. and Mrs. Gary M. Kenny  
 Mr. and Mrs. Brian Kautz  
 Mr. Kenneth B. Knight  
 Ms. Kimberly Lane  
 Dr. and Mrs. Richard V. Liles, Jr.  
 Ms. Anne D. Lytch  
 Mrs. Rebecca Reitz McKinley  
 Mr. and Mrs. Fred Bruton Monroe  
 Mr. and Mrs. Dewey Peck  
 Mr. and Mrs. Bynum H. Phillips, Jr.  
 Mr. and Mrs. Clifton Pickett  
 Ms. Martha Rogers Plaster  
 Ms. Doris Porter

Miss Anna Newsom Rankin\*  
 Dr. and Mrs. A. R. Riggs\*  
 Miss Heather Bell Roberts  
 Mr. and Mrs. Charles E. Roe  
 Mrs. Gordon Scott, Sr.  
 Mrs. Eleanor E. Sifford  
 Mrs. Mildred H. Spry  
 Mr. and Mrs. Wilburn S. Swaim\*  
 Mr. Greg Talbott and Ms. Jean Vollrath  
 Mrs. Charles David Taylor  
 Ms. Juanita Bouser Techner  
 Mr. Charles Robert Thurston  
 Mrs. Robert Randolph Turner III  
 Dr. and Mrs. Harry G. Walker  
 Mr. and Mrs. W. Max Walser  
 Dr. Martha Kirkland West  
 Mr. Donald L. Weinhald

### **Special Stewardship Gifts**

Mr. John Holton  
 Ms. Margaret F. Grigg  
 Mr. Bobby C. Sheets  
 Mr. William K. Templeton  
 Mr. and Mrs. Donald C. Webster, Jr.

### **Honorariums**

*In honor of*  
 Ms. Sarah Borders  
 Mr. and Mrs. Layton Geitsinger  
 Mr. and Mrs. Saul Gordon  
 Mr. and Mrs. Albert Schneider  
 Mr. and Mrs. Ned Storey  
 Ms. Sue Carter Walser

*In honor of*  
 A. Wayne Cook  
 Lynn MacDougall-Fleming  
 Ken and Mary Smith  
 Reverend Dr. Cathy A. Cook  
 and Mr. Kenneth E. Criffield

*In honor of Michele d'Hemecourt*  
 Lexington Garden Club

*In honor of Amy Grissom*  
 Mr. Peter Wilson Hairston

*In honor of Judge Peter Wilson Hairston*  
 Ms. Arlene Edwards  
 Thompson

*In honor of John Hart*  
 Mr. John M. Henderlite, Jr.

*In honor of Elizabeth Iwaoka*  
 Dr. Robert Iwaoka

*In honor of Barbara Lawther*  
 Mr. and Mrs. Benjamin H.  
 Bridges III

*In honor of Boone Richard Redding*  
 Mr. Charles R. Coble

*In honor of Chance, Marjorie, Chancellor, and Rees Reynolds*  
 Mr. William R. Lee

*In honor of Kevin Redding*  
 St. Paul's Lutheran Men

*In honor of Fred and Alice Stanback*  
 Ms. Laura Hays Frazier

*In honor of Bill and Nancy Stanback*  
 Ms. Ann C. Boyd  
 Ms. Laura Hays Frazier

*In honor of The LandTrust Staff*  
 Mr. and Mrs. Andrew J.  
 Abramson

*In honor of Sue Carter Walser*  
 Mr. and Mrs. Ned A. Storey  
 Ms. Sarah Borders

### **Memorials**

*In memory of Dr. Isabel Bittinger*  
 Mr. Peter Wilson Hairston

*In memory of Harry Blount, Jr.*  
 Mr. Jeff S. Smith

*In memory of James Cashion*  
 Mr. and Mrs. Ray Raymer, Jr.

*In memory of Mary E. Cuthrell*  
 Mr. Hiram Cuthrell

*In memory of Mary Omwake Dearborn*  
 Ms. Sue Carter Walser

*In memory of Mr. and Mrs. Myron Arthur Goodman, Sr.*  
 Ms. Catherine Goodman  
 Farley

*In memory of William A. Hannah, Jr.*  
 Ms. Margaret H. Craven

*In memory of L. Emery Nickerson*  
 Dr. Lloyd Nickerson

*In memory of Hattie Privette*  
 Ms. Sue Carter Walser

*In memory of Mr. and Mrs. Klynt Ripple*  
 Mr. and Mrs. Sherman Cook

*In memory of Willie Scott*  
 Ms. Sue Carter Walser

*In memory of Ethel Philemon Simpson*  
 Mr. Peter Wilson Hairston

*In memory of Zackary Z. Smith*  
 Mr. and Mrs. Dan G. Smith

*In memory of Virginia Holt Spake*  
 Mr. Angelo Capparella

*In memory of Mr. Carroll Suther*  
 Mr. and Mrs. Ray Raymer  
 Mr. and Mrs. Ray Raymer, Jr.

*In memory of Hazel Thomas*  
 Ms. Sue Carter Walser

*In memory of Albert F. Walser*  
 Mr. and Mrs. Ned A. Storey

*In memory of LeeRoy Dick Walton*  
 Mr. and Mrs. Charles H.  
 Harris

### **Gift Memberships**

*Mr. Bernard Arthur and Ms. Molly Vanhoy*  
 Ms. Julia Smith

*Mr. Charles Waters and Ms. Linda Moxley*

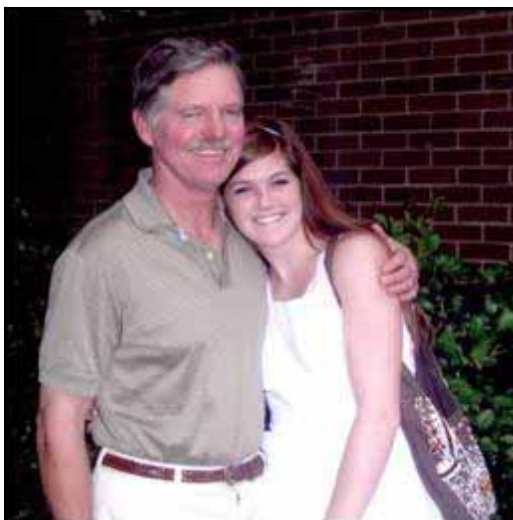
Mr. and Mrs. Andrew Waters

# Board Member Profile: Darryl Corriher

Darryl Corriher first joined The LandTrust Board of Directors in 2001. He brings with him a wealth of knowledge and a sincere interest in the future of farming and open space in the North Carolina Piedmont.

His tremendous dedication to the activities of The LandTrust is not his only commitment to land conservation in North Carolina. A native North Carolinian, Darryl grew up in Southwestern Rowan County, where he now resides with wife, Barbara, and children Claire and Addison.

A graduate of Duke University in 1973, Darryl understands the importance of agriculture and farming in North Carolina firsthand. He is a partner with Tom Hall of Cleveland, NC and together they operate C&H Grain, LLC. They farm approximately 3,200 acres of land, where they grow wheat, corn and soybeans. Darryl's partnership has won several state yield awards in soybeans and corn production. He now serves on the Board of Directors of both the NC Soybean Producers Association and Atlantic Bioenergy LLC.



*Board Member Darryl Corriher and daughter.*

When asked why he has agreed to use his expertise and valuable time to serve The LandTrust as a Board member, Darryl states "The most important work of The LandTrust is preserving open space in strategic locations. I am involved because I think it is the best organization for achieving these goals, and it has very committed leadership and staff."

Thanks Darryl!

## Thank you, Pete!

The LandTrust would like to take this opportunity to thank Pete Diamond for all of his assistance and hard work. Pete, formerly a horticulturalist with the N.C. Zoo, has recently accepted a field botanist position with the Florida Natural Areas Inventory. During his time at the Zoo, Pete helped The LandTrust in a variety of ways including leading hikes, serving on the Stewardship Committee and authoring the Davidson County Natural Heritage Inventory. Aside from his professional contributions, Pete's outgoing and cheerful personality have made him a favorite of the staff. His energy, incredible knowledge and commitment to our cause will be greatly missed. We hope you'll join us in wishing Pete the very best in his future endeavors.





*Jason Walser shares a map of the Bingham Lands with Alice Stanback and Dennis Testerman.*



*Dr. Steve Colwell lends a hand to his daughter, Caroline, at the greenway lighting.*



*Connor Coleman and Dyke Messinger plan the route on the Uwharrie Trail.*

## THE LANDTRUST FOR CENTRAL NORTH CAROLINA

The LandTrust is a private, nonprofit organization working with private and public landowners to protect the special natural areas, family farms and rural landscapes of Anson, Cabarrus, Davidson, Davie, Iredell, Montgomery, Randolph, Richmond, Rowan and Stanly Counties. With 501 (c) (3) status, all donations to The LandTrust qualify for maximum tax deductions.

### BOARD OF DIRECTORS

Dan R. Williams, President  
 Edward P. Norvell, Vice President  
 H. Franklin Sherron, Jr., Secretary  
 Dyke Messinger, Treasurer  
 Moni C. Bates  
 Darryl Corriher  
 J. Keith Crisco  
 Lindsey Dunevant  
 Amy Grissom  
 John Hart  
 Jeffery D. Michael  
 Peg Knox Morrison  
 John Peeler  
 David F. Simmons

### BOARD OF ADVISORS

Joe Adams  
 Raymond D. Coltrain  
 J. Myrick Howard  
 Margaret H. Kluttz  
 John Lentz  
 Joseph McDonald  
 David Springer  
 Alice Stanback  
 Fred Stanback  
 William C. Stanback  
 Charles E. Roe  
 Roberts E Timberlake

### STAFF

Jason A. Walser, *Executive Director*  
 Kevin Redding, *Associate Director*  
 Andrew Waters, *Operations Director*  
 Barbara Martin Lawther, *Development Director*  
 Michele d'Hemecourt, *Land Protection Specialist*  
 Connor P. Coleman, *Stewardship and Land Conservation Coordinator*  
 Crystal Cockman, *Uwharrie Conservation Specialist*



*To protect and preserve the land—natural areas, rural landscapes, family farms and historic places within North Carolina's heartland.*

P.O. Box 4284  
 Salisbury, NC 28145  
 704-647-0302

Non-Profit Org.  
 U.S. Postage  
**PAID**  
 Salisbury, NC  
 Permit No. 111